

BOBCAT COMPANY PRICE PAGES

NA LOADERS – COMPACT TRACK



Please note the following when using Bobcat Price Pages:

- All prices are shown in U.S. dollars.
- Check BobcatNET Pricing Homepage for current Canadian exchange rate.
- To ensure having the correct Part Number for a Dealer Installed Accessory, obtain the loader model and serial number and check with Dealer Parts Department.
- For current Dealer Installed Accessories pricing, reference BobQuote or Dealer Parts Department.
- Prices and specifications are subject to change without notice.

THE FOLLOWING UPDATES HAVE BEEN MADE TO THIS DOCUMENT:

Date	Description of Change
01/01/2015	Discontinued H31 Cab Package, H71 Cab Package and P03-F40 High Flow and Hydraulic Bucket Positioning Package.
03/23/2015	Added Tier 4 T750, T770 and T870.
05/15/2015	Updated select Dealer Installed Accessories.
06/12/2015	Added Tier 4 T740.
10/19/2015	Added 2-Speed Option for T550 and T590
01/01/2016	Effective Friday, January 1 st , 2016 Bobcat Company has adjusted the SLP of select options and power units.
03/11/2016	Added Tier 4 T595.
10/12/2016	Updated with M2-Series loaders.
06/08/2017	Added T870 with Torsion Suspension.
10/03/2017	Replaced Vinyl Air Ride Seat option with Heated Cloth Air Ride Seat option.
10/25/2017	Removed Rear Aux Kit 7270096 from T870 Torsion
01/01/2018	Added extended warranty on Bobcat Engine machines
01/01/2018	Updated SLP on select machines on January 1 st 2018
01/01/2018	Moved T750 T4 to discontinued models
01/03/2018	Revised packages for T770 and updated price
01/26/2018	Added Rear Camera Kit to select loaders
2/13/2018	Added Rear Auxillary Kit to T870 Torsion
05/01/2018	Effective Tuesday, May 1, 2018 Bobcat Company has adjusted the SLP of select options and power units.
01/01/2019	Discontinued the following options; Single Speed Roller Suspension: R231-C11, ACS Controls: R01-C03

**Certain Specification(s) are based on engineering calculations and are not actual measurements. Specification(s) are provided for comparison purposes only and are subject to change without*

BOBCAT COMPANY PRICE PAGES NA LOADERS – COMPACT TRACK



Please note the following when using Bobcat Price Pages:

- All prices are shown in U.S. dollars.
- Check BobcatNET Pricing Homepage for current Canadian exchange rate.
- To ensure having the correct Part Number for a Dealer Installed Accessory, obtain the loader model and serial number and check with Dealer Parts Department.
- For current Dealer Installed Accessories pricing, reference BobQuote or Dealer Parts Department.
- Prices and specifications are subject to change without notice.

notice. Specification(s) for your individual Bobcat equipment will vary based on normal variations in design, manufacturing, operating conditions, and other factors.

T450 (Tier 4) BOBCAT COMPACT TRACK LOADER



STANDARD EQUIPMENT

- | | |
|--|---|
| 61 HP Turbo Tier 4 Diesel Engine
Auxiliary Hydraulics: Variable Flow
Backup Alarm
Bob-Tach
Bobcat Interlock Control System (BICS™)
Controls: Bobcat Standard
Engine/Hydraulic Systems Shutdown
Glow Plugs (Automatically Activated)
Horn
Instrumentation: Engine Temperature & Fuel
Gauges, Hourmeter, RPM and Warning Lights
Lift Arm Support
Lift Path: Radius
Lights, Front & Rear | Operator Cab <ul style="list-style-type: none"> • Includes: Adjustable Suspension Seat, Top & Rear Windows, Parking Brake, Seat Bar & Seat Belt • Roll Over Protective Structure (ROPS) meets SAE-J1040 & ISO 3471 • Falling Object Protective Structure (FOPS) meets SAE-J1043 & ISO 3449, Level I; (Level II is available through Bobcat Parts) Parking Brake – Spring Applied, Pressure Released (SAPR)
Solid Mounted Carriage with 3 Rollers
Spark Arrestor Exhaust System
Tracks: Rubber, 11.8" Wide |
|--|---|

QUICK SPECS

Rated Operating Capacity – 35% of Tipping Load	1,400 lbs.
Rated Operating Capacity – 50% of Tipping Load	2,000 lbs.
Tipping Load	4,000 lbs.
Engine Model	2.4L Bobcat Engine
Engine Fuel.....	Diesel
Engine Cooling.....	Liquid
Horsepower	61
Hydraulic Pump Capacity-Standard Flow	16.7 GPM
Travel Speed.....	7.3 MPH
Travel Speed – 2 Speed Option	7.3/11.0 MPH
Operating Weight	6,148 lbs.
Shipping Weight.....	5,555 lbs.
Cab Height.....	77.8"
Width (w/out Attachment).....	55.0"
Length (w/out Attachment)	98.4"
Ground Contact Length	50.2"
Reach at Maximum Height.....	23.5"
Height to Hinge Pin	109.5"

T450 (Tier 4)

BOBCAT COMPACT TRACK LOADER

PART NUMBER	DEALER INSTALLED ACCESSORIES – ORDER FROM PARTS DESCRIPTION
-------------	---

Part numbers for kits in this section are current as of May 2015 and pertain to current loader models as of that date. To ensure having the correct Part Number for a Dealer Installed Accessory, obtain the loader model and serial number and check with Dealer Parts Department. For the most current Dealer Installed Accessories pricing, refer to BobQuote or Dealer Parts Department.

Cab Accessories – Enclosures, Doors, Windows

7128393	CAB ENCLOSURE DOOR KIT \$ _____ Cab Accessory Harness is required, see Cab Accessory Harness & Lower Interior Panels kit for details. Includes Front Door with Sensor Switch and Wiper/Washer. Must also order Side Windows Kit and Cab Seals Kit to completely enclose cab. Est. Install time: 3.5 hrs.	
7186723	FOPS WINDOW KIT \$ _____ Est. Install time: 10 min.	
7174127	FORESTRY DOOR KIT \$ _____ Cab Accessory Harness is required, see Cab Accessory Harness & Lower Interior Panels kit for details. Est. Install time: 2 hrs.	
7182335	SLIDING SIDE LEXAN WINDOWS KIT \$ _____ Includes 2 Sliding Side Lexan Windows. Est. Install time: 1 hr.	
7128342	SLIDING SIDE WINDOWS KIT \$ _____ Includes 2 Sliding Side Windows. Must also order Cab Enclosure Door Kit to completely enclose cab. Est. Install time: 1 hr.	
7128395	SPECIAL APPLICATIONS POLYCARBONATE DOOR KIT \$ _____ Provides added operator protection during some attachment applications. Includes ½" thick polycarbonate front door. Must order a Side Windows Kit, Cab Seals Kit and Special Applications Rear Window to completely enclose cab. Est. Install time: 3 hrs.	
7214673	SPECIAL APPLICATIONS POLYCARBONATE REAR WINDOW KIT \$ _____ Provides added operator protection during some attachment applications. Includes ½" thick polycarbonate rear window. Must order a Side Windows Kit, Cab Seals Kit and Special Applications Front Door to completely enclose cab. Est. Install time: 0.5 hr.	

Cab Accessories – Heat and Air Conditioning

7244628	AIR CONDITIONING KIT \$ _____ Loader must be equipped with Cab Enclosure with Heater. Est. Install time:	
7128484	HEATER KIT \$ _____ Cab Accessory Harness is required, see Cab Accessory Harness & Lower Interior Panels kit for details. Must also order heater plumbing kit. Est. Install time: 5 hrs. to install heater and plumbing kit	
7244626	HEATER PLUMBING KIT \$ _____ Est. Install time: 5 hrs. to install heater and plumbing kit	

Cab Accessories – Other

_____	CAB ACCESSORY HARNESS & LOWER INTERIOR PANELS KIT \$ _____ See Dealer Parts Department for the correct kit part number. This kit is needed for Base Cabs Only when field installing any of the following accessories; cab enclosure with heat or air conditioning, four-way flasher / turn signal kit, hydraulic bucket positioning, power Bob-Tach kit, rear wiper kit, rotating beacon kit, strobe light kit or radio. Includes Cab Accessory Harness and Lower Interior Panels. Need to order Deluxe Headliner Kit or Deluxe Heater/Air Conditioning Headliner Kit & Cup Holder Kit to finish interior. Est. Install time: 5 hrs.	
7167395	CUP HOLDER KIT \$ _____ Lower Interior Panels are required, see Cab Accessory Harness & Lower Interior Panels kit for details. Includes side and front cup holder. Est. Install time: 1 hr.	
7227849	CAB SEALS KIT \$ _____ Includes bottom of cab and foot pod area seals. Needed to completely enclose the cab. Est. Install time: 2.5 hrs.	

T450 (Tier 4)

BOBCAT COMPACT TRACK LOADER

PART DEALER INSTALLED ACCESSORIES – ORDER FROM PARTS

PART NUMBER	DESCRIPTION	
<u>Cab Accessories – Other (continued)</u>		
7170782	DELUXE CAB GAS SPRING KIT 3rd gas spring for enclosed cab. Est. Install time: 1 hr.	\$ _____
7156253	DELUXE HEADLINER KIT Includes headliner with light and rear corner cab trim. Est. Install time: 1 hr.	\$ _____
7174171	DELUXE HEATER / AIR CONDITIONING HEADLINER KIT Includes Headliner with interior light, air conditioning/heater vents and rear corner cab trim. Needed to upgrade non-AC/Heater cab to include AC/Heat. Est. Install time: 1 hr.	\$ _____
7196560	FORESTRY WIPER KIT Loader must be equipped with Forestry Door; Reference P/N 7174127 Forestry Door or 7230523 Forestry Applications Kit for detail. Est. Install time: 1 hr.	\$ _____
7196560	HEPA FILTER KIT Est. Install time: 0.5 hr.	\$ _____
7240148	INTERMITTENT WIPER KIT Includes intermittent wiper switch, cover, harness and tie straps. Kit allows operator to adjust the speed of the wiper to match the operating conditions. Est. Install time: 1 hr.	\$ _____
7234899	REAR WINDOW EXTERNAL REMOVAL KIT Recommended for use with Loader Radio Remote Control kit. Est. Install time: 1 hr.	\$ _____
7225133	REAR WIPER KIT Cab Accessory Harness is required, see Cab Accessory Harness & Lower Interior Panels kit for details. Deluxe Headliner, Lower Interior Panels and Front Door with Wiper are also required. Wiper is activated by a switch on the rear wiper motor. Est. Install time: 4 hrs.	\$ _____
7172897	RESEAL PLUGS KIT Includes plugs to seal cab and frame after the removal of the following: FOPS Kit, Single Point Lift Kit, Four Point Lift Kit, and Backhoe Attachment. Est. Install time: 1 hr.	\$ _____
7172903	WHITE DECAL KIT (CAB TOP) Applied to cab top to maintain a cooler temperature inside the operator’s cab. Est. Install time: 0.5 hr.	\$ _____
<u>Counterweight Kits</u>		
7129250	COUNTERWEIGHT KIT, 200 LBS Includes (4) 50 pound weights that bolt to rear uprights of loader. See operator’s manual for ROC increase. Not compatible with Quick-Tach Water Kit or Rear Stabilizers. Est. Install time: 1 hr.	\$ _____
<u>Electrical Accessories</u>		
_____	ATTACHMENT CONTROL KIT For complete listing of Attachment Control Kits, P/N’s and Descriptions – Refer to Attachments Section of the Price Pages.	\$ _____
7169103	CAB ACCESSORY ADAPTER HARNESS For Loaders without Cab Accessory Harness. Needed for Strobe, Beacon and Four-Way Flasher. Est. Install time: 0.5 hr.	\$ _____
7128338	FOUR-WAY FLASHER / TURN SIGNAL KIT Cab Accessory Harness or Cab Accessory Adapter Harness is required; Reference Cab Accessory Harness & Lower Interior Panels kit or Cab Accessory Adapter Harness for details. Est. Install time: 1 hr.	\$ _____
7129299	ROTATING BEACON KIT Cab Accessory Harness or Cab Accessory Adapter Harness is required; Reference Cab Accessory Harness & Lower Interior Panels kit or Cab Accessory Adapter Harness for details. Est. Install time: 1 hr.	\$ _____
7129301	STROBE LIGHT KIT, AMBER Cab Accessory Harness or Cab Accessory Adapter Harness is required; Reference Cab Accessory Harness & Lower Interior Panels kit or Cab Accessory Adapter Harness for details. Est. Install time: 1 hr.	\$ _____

T450 (Tier 4)

BOBCAT COMPACT TRACK LOADER

PART DEALER INSTALLED ACCESSORIES – ORDER FROM PARTS

PART NUMBER	DESCRIPTION		
<u>Engine Accessories</u>			
7237289	ENGINE BLOCK HEATER	\$ _____	
	Est. Install time: 0.25 hrs.		
<u>Hydraulic Accessories</u>			
7254136	HYDRAULIC BUCKET POSITIONING KIT	\$ _____	
	Bucket Positioning helps the operator keep the same tilt position of the load during lifting. Cab Accessory Harness is required, see Cab Accessory Harness & Lower Interior Panels kit for details. Includes on/off switch. Est. Install time:		
7249869	REAR AUXILIARY HYDRAULIC KIT	\$ _____	
	Provides a flow of 8.5 GPM. Est. Install time: 10 hrs.		
<u>Instrumentation</u>			
7213928	DELUXE INSTRUMENT PANEL WITH KEYLESS START	\$ _____	
	Includes keyless start, feature lockouts, help screens, clock, job clock, system diagnostic capability and more. Est. Install time: 1 hr.		
7213929	KEYLESS START PANEL KIT	\$ _____	
	Allows operator to start the loader by entering a reprogrammable number code. Est. Install time: 1 hr.		
<u>Lift Kits</u>			
7241506	FOUR-POINT LIFT KIT	\$ _____	
	Cannot be used on loaders equipped with Backhoe Mounting Kit. Est. Install time:		
7244677	SINGLE POINT LIFT KIT	\$ _____	
	Est. Install time:		
<u>Loader Guard Kits</u>			
7251551	CROSS MEMBER TUBE LINE SHIELD KIT	\$ _____	
7129293	FOPS KIT	\$ _____	
	Additional shield assembly for cab top. Meets ISO 3449, Level II Requirements. Est. Install time: 1 hr.		
7244920	MUFFLER GUARD KIT	\$ _____	
	Est. Install time: 0.25 hr.		
7239159	REAR WORK LIGHTS GUARD KIT	\$ _____	
	Est. Install time: 0.5 hr.		
7174129	FRONT WORK LIGHTS GUARD KIT	\$ _____	
	Est. Install time: 0.5 hr.		
7248293	TILT CYLINDER SHIELD KIT	\$ _____	
	Est. Install time: 0.5 hr.		
<u>Power Bob-Tach Kits</u>			
7254137	POWER BOB-TACH KIT AND PLUMBING KIT	\$ _____	
	Cab Accessory Harness is required, see Cab Accessory Harness & Lower Interior Panels kit for details. Must also order Power Bob-Tach Plumbing Kit. Est. Install time: to install Power Bob-Tach Kit and Plumbing Kit		
<u>Radio</u>			
6988435	RADIO KIT	\$ _____	
	Includes weatherproof AM/FM/NOAA Weather Band Radio, Radio Mounting Bracket, Speakers, Antenna, and Installation Hardware. Works with MP3 or other portable music player. Cab Accessory Harness is required, see Cab Accessory Harness & Lower Interior Panels kit for details. Est. Install time: 3 hrs.		
6676108	RADIO HEADPHONES	\$ _____	

T450 (Tier 4)

BOBCAT COMPACT TRACK LOADER

PART NUMBER DEALER INSTALLED ACCESSORIES – ORDER FROM PARTS DESCRIPTION

Remote Control Kits

7185234 LOADER RADIO REMOTE CONTROL KIT \$
 Allows an operator to start/stop the engine, operate the drive system and control the lift, tilt and auxiliary hydraulic functions remotely using a Radio Transmitter. The operator must maintain visual contact with the loader and the loader's path of travel. Available for loaders equipped with Selectable Joystick Controls (SJC) or All Wheel Steer Loaders. Requires version 57 software or newer.
 Est. Install time: 0.5 hr.

6986516 LOADER RADIO REMOTE OPERATOR TRAINING KIT..... \$

Reversing Fan Kits

7304960 REVERSING FAN KIT \$
 Temporarily reverses cooling fan direction to blow dust and small debris from the radiator and rear screens. Includes three operating modes: Automatic, Momentary and OFF. Cab Accessory Harness is required, see Cab Accessory Harness & Lower Interior Panels kit for details. Est. Install Time: 3 hrs.

Ride Control Kits

7246068 RIDE CONTROL KIT..... \$
 Provides a smoother ride by cushioning the lift arms when traveling over rough terrain.
 Est. Install time:

Seats & Seat Belts

6703640 SEAT BELT KIT, 3" (STANDARD SEAT)..... \$
 For use with Standard Seat only. Includes 3" lap belt.
 Est. Install time: 0.5 hr.

7129303 SEAT BELT KIT, 3" (SUSPENSION SEAT) \$
 For use with Suspension Seat only. Includes 3" retractable lap belt.
 Est. Install time: 0.5 hr.

7128405 SEAT BELT KIT, 3-POINT \$
 For use with Suspension Seat only. Includes 2" shoulder belt and 2" lap belt.
 Est. Install time: 0.5 hr.

7169480 SEAT BELT KIT-3", 3-POINT..... \$
 For use with Suspension Seat only. Includes 2" shoulder belt and 3" lap belt.
 Est. Install time: 0.5 hr.

7128524 SUSPENSION SEAT \$
 Vinyl material. Must also order a seat belt kit unless previously equipped with suspension seat.
 Est. Install time: 1 hr.

7183366 SUSPENSION SEAT, AIR RIDE \$
 Vinyl material. Must also order a seat belt kit unless previously equipped with suspension seat.
 Est. Install time: 1 hr.

Sound Reduction Kits

7254141 SOUND REDUCTION KIT \$
 Includes insulating materials and a hydraulic muffler to reduce sound levels at the operator's ear and for bystanders.
 Est. Install time: 2 hrs.

7252091 DELUXE SOUND KIT FOR STANDARD OR ACS CONTROLS..... \$
 Includes foot pod insulating materials to reduce sound levels at the operator's ear.
 Est. Install time: 1 hr.

7252092 DELUXE SOUND KIT FOR SJC CONTROLS..... \$
 Includes foot pod insulating materials to reduce sound levels at the operator's ear.
 Est. Install time: 1 hr.

Training Kits

6901726 BOBCAT LOADER OPERATOR TRAINING KIT \$

6900641 BOBCAT LOADER SERVICE TRAINING KIT \$

6904762 BOBCAT OPERATOR SAFETY DVD \$
 Includes all of the 10-minute operator safety videos in both English and Spanish.

T450 (Tier 4)

BOBCAT COMPACT TRACK LOADER

DEALER INSTALLED ACCESSORIES – ORDER FROM PARTS

PART NUMBER	DESCRIPTION	PRICE
<i><u>Other Accessories</u></i>		
7129307	FIRE EXTINGUISHER KIT Est. Install time: 0.5 hr.	\$ _____
7257869	LOADER WEIGHLOG SCALE KIT Measures hydraulic pressure at a specific position during the lifting cycle for either static or dynamic weighing. The weighlog kit is not a certified scale. Please see Bobcat Parts Sales & Merchandising Manual for additional details. Est. Install time: 4 hrs.	\$ _____
7023550	LOCKING FUEL CAP Includes a Black Locking Fuel Cap which is keyed the same as the loader. Key is Not included. Additional locking fuel cap options are available through parts.	\$ _____
7128403	TAILGATE LOCK KIT Est. Install time: 0.5 hr.	\$ _____

T550/T590/T595 (Tier 4) BOBCAT COMPACT TRACK LOADER



STANDARD EQUIPMENT

66 HP Turbo Tier 4 Diesel Engine (T550/T590)
74 HP Turbo Tier 4 Diesel Engine (T595)
Auxiliary Hydraulics: Variable Flow
Backup Alarm
Bob-Tach
Bobcat Interlock Control System (BICS™)
Controls: Bobcat Standard
Cylinder Cushioning – Lift, Tilt
Engine/Hydraulic Systems Shutdown
Glow Plugs (Automatically Activated)
Horn
Instrumentation: Engine Temperature & Fuel Gauges,
Hourmeter, RPM and Warning Lights
Lift Arm Support
Lift Path: Radius (T550), Vertical (T590/T595)

Lights, Front & Rear
Operator Cab

- Includes: Adjustable Suspension Seat, Top & Rear Windows, Parking Brake, Seat Bar & Seat Belt
- Roll Over Protective Structure (ROPS) meets SAE-J1040 & ISO 3471
- Falling Object Protective Structure (FOPS) meets SAE-J1043 & ISO 3449, Level I; (Level II is available through Bobcat Parts)

Parking Brake – Spring Applied, Pressure Released (SAPR)
Solid Mounted Carriage with 4 Rollers
Spark Arrestor Exhaust System
Tracks: Rubber, 12.6" Wide

QUICK SPECS

	T550	T590	T595
Rated Operating Capacity-35% of Tipping Load*	1,995 lbs.	2,100 lbs.	2,200 lbs.
• with Roller Suspension Carriage	1,895 lbs.	1,950 lbs.	2,050 lbs.
Operating Capacity- 50% of Tipping load.....	2,850 lbs.	3,000 lbs.	3,142 lbs.
Tipping Load	5,700 lbs.	6,000 lbs.	6,285 lbs.
Engine Model	2.4L Bobcat Engine	2.4L Bobcat Engine	2.4L Bobcat Engine
Engine Fuel.....	Diesel	Diesel	Diesel
Engine Cooling	Liquid	Liquid	Liquid
Horsepower.....	66	66	74
Hydraulic Pump Capacity – Standard Flow.....	17.1 GPM	17.1 GPM	17.1 GPM
Hydraulic Pump Capacity – High Flow (optional)	26.7 GPM	26.7 GPM	26.7 GPM
Travel Speed.....	7.1 MPH	7.1 MPH	7.1 MPH
Travel Speed – 2 Speed	7.1/10.4 MPH	7.1/10.4 MPH	7.1/10.4 MPH
Operating Weight	7,557 lbs.	7,822 lbs.	8,055 lbs.
• with Roller Suspension Carriage	7,758 lbs.	8,007 lbs.	8,226 lbs.
Shipping Weight	6,746 lbs.	7,026 lbs.	7,226 lbs.
Cab Height	77.8"	77.8"	77.8"
Width (w/out Attachment)	67.0"	67.0"	67.0"
Width with Wide Track Option (w/out Attachment)	70.1"	70.1"	70.1"
Length (w/out Attachment).....	104.6"	104.6"	104.6"
Ground Contact Length	54.1"	54.1"	54.1"
Reach at Maximum Height	19.3"	34.9"	34.9"
Height to Hinge Pin	114.5"	119.0"	119.0"

* T595 is equipped with 200 lb. frame mounted counterweights

T550/T590/T595 (Tier 4) BOBCAT COMPACT TRACK LOADER

PART NUMBER	COMPACT TRACK LOADER	SLP IN US \$
-------------	----------------------	--------------

M0255	T550 COMPACT TRACK LOADER (EQUIPPED WITH TIER 4 ENGINE).....	\$52,592
M0263	T590 COMPACT TRACK LOADER (EQUIPPED WITH TIER 4 ENGINE).....	\$55,818
M0249	T595 COMPACT TRACK LOADER (EQUIPPED WITH TIER 4 ENGINE).....	\$56,343

PART NUMBER	AIR CONDITIONED/HEATED CAB PACKAGES	SLP IN US \$
-------------	-------------------------------------	--------------

M__-P01-A91	A91 OPTION PACKAGE	\$11,016
M__-P01-A71	A71 OPTION PACKAGE	\$6,669
M__-P01-A51	A51 OPTION PACKAGE	\$5,133

<u>A51</u>	<u>A71</u>	<u>A91</u>
Enclosed Cab with AC/Heat Cab Accessories Package* Power Bob-Tach	Enclosed Cab with AC/Heat Cab Accessories Package* Power Bob-Tach Sound Reduction Deluxe Instrument Panel with Keyless Start Attachment Control Kit	Enclosed Cab with AC/Heat Cab Accessories Package* Power Bob-Tach Sound Reduction Deluxe Instrument Panel with Keyless Start Attachment Control Kit High Flow Hydraulics Two Speed w/ 3-Point Seat Belt Hydraulic Bucket Positioning

PART NUMBER	OPEN CAB PACKAGES	SLP IN US \$
-------------	-------------------	--------------

M__-P01-O51	O51 OPTION PACKAGE	\$1,331
-------------	--------------------------	---------

<u>O51</u>
Cab Accessories Package* Power Bob-Tach

**Cab Accessories Package: Deluxe Headliner with Dome Light, Cab Accessory Harness, Power Port, Lower Interior Panels with Storage Compartments and Cup Holder.*

T550/T590/T595 (Tier 4) BOBCAT COMPACT TRACK LOADER

PART NUMBER	FACTORY INSTALLED OPTIONS DESCRIPTION	SLP IN US \$
-------------	---------------------------------------	--------------

Controls

M__-R01-C03	ADVANCED CONTROL SYSTEM (ACS) [Discontinued] \$2,110 ACS allows operator to select either hand or foot control of lift and tilt functions. <i>*The Cab Accessories Package is required.</i>	
M__-R01-C04	SELECTABLE JOYSTICK CONTROL (SJC) \$795 Features include: Selectable patterns (ISO or H-Pattern), Auto Idle, Horsepower Management, Speed Management, Drive Response, Drift Compensation and Foot Pedal for Engine Speed Control. <i>*The Cab Accessories Package is required.</i>	

Individual Option Requirements

NOTE: *The following options may require additional equipment, see details below. If the required equipment is not included in a Cab Package the Bobcat ordering systems will automatically add the equipment to the order.*

CAB ACCESSORIES PACKAGE

Required for Reversing Fan, Hydraulic Bucket Positioning, Automatic Ride Control, ACS and SJC. The Cab Accessories Package is included in all Cab Packages. If a Cab Package is not ordered, you must add \$495

7-PIN ATTACHMENT CONTROL KIT

Required for High Flow Hydraulics. The 7-Pin Attachment Control Kit is included in the A71 and A91 Cab Packages, if one of those Cab Packages is not ordered, you must add \$245

Individual Options

The options may require additional equipment for operation, see option requirements above for details.

M__-R03-C03	HIGH FLOW HYDRAULICS \$1,875 Provides 26.7 GPM and 3500 PSI for attachment operation. The 7 pin attachment control kit is required. See NOTE above.	
M__-R04-C02	TWO SPEED \$2,190 Includes 2-Speed motors and 3-Point Seat Belt Low Travel Speed 7.1 MPH, High Travel Speed 10.4 MPH	
M__-R11-C02	HYDRAULIC BUCKET POSITIONING \$558 Bucket Positioning helps the operator keep the same tilt of the load during lifting. Includes On/Off switch. The Cab Accessories Package is required. See NOTE above.	
M__-R05-C11	CLOTH HEATED AIR RIDE SUSPENSION SEAT \$475 Includes Heat on/off switch on the back of the seat. Must order an A or O cab package.	
M__-R26-C02	RADIO \$498 Must order an A or O cab package. Works with MP3 or other portable music player. Includes weatherproof AM/FM/NOAA Weather Band Radio, Speakers, and Antenna.	
M__-R32-C02	REVERSING FAN \$616 Temporarily reverses the cooling fan direction to blow dust and small debris from the radiator and rear screens. Includes three operating modes: Automatic, Momentary, & OFF. The Cab Accessories Package is required. See NOTE above.	
M__-R33-C02	AUTOMATIC RIDE CONTROL \$741 Automatically activates by detecting increased hydraulic lift arm pressure when the loader is carrying material. Includes on/off switch. The Cab Accessories Package is required. See NOTE above.	

Tracks

M__-R09-C02	16" RUBBER TRACK \$1,566 Compatible with Solid Mounted or Roller Suspension Carriages. Loader width is 70.1".	
M__-R21-C11	ROLLER SUSPENSION CARRIAGE [MUST ORDER TWO SPEED] \$1,697 Includes Solid Mounted Undercarriage and 3 Rollers with Leaf Spring style suspension. Compatible with 12.6" tracks (Loader width 70.0") or 16" tracks (Loader width is 70.1"). <i>Roller suspension carriage is not available with single speed</i>	

T550/T590/T595 (Tier 4) BOBCAT COMPACT TRACK LOADER

PART NUMBER DEALER INSTALLED ACCESSORIES – ORDER FROM PARTS DESCRIPTION

Part numbers for kits in this section are current as of October 2016 and pertain to current loader models as of that date. To ensure having the correct Part Number for a Dealer Installed Accessory, obtain the loader model and serial number and check with Dealer Parts Department. For the most current Dealer Installed Accessories pricing, refer to BobQuote or Dealer Parts Department.

Cab Accessories – Enclosures, Doors, Windows

7128393	CAB ENCLOSURE DOOR KIT..... Cab Accessory Harness is required, see Cab Accessory Harness & Lower Interior Panels kit for details. Includes Front Door with Sensor Switch and Wiper/Washer. Must also order Side Windows Kit and Cab Seals Kit to completely enclose cab. Est. Install time: 3.5 hrs.	\$ _____
7186723	FOPS WINDOW KIT Est. Install time: 10 min.	\$ _____
7174127	FORESTRY DOOR KIT Cab Accessory Harness is required, see Cab Accessory Harness & Lower Interior Panels kit for details. Est. Install time: 2 hrs.	\$ _____
7182335	SLIDING SIDE LEXAN WINDOWS KIT Includes 2 Sliding Side Lexan Windows. Est. Install time: 1 hr.	\$ _____
7128342	SLIDING SIDE WINDOWS KIT Includes 2 Sliding Side Windows. Must also order Cab Enclosure Door Kit to completely enclose cab. Est. Install time: 1 hr.	\$ _____
7128395	SPECIAL APPLICATIONS POLYCARBONATE DOOR KIT Provides added operator protection during some attachment applications. Includes ½" thick polycarbonate front door. Must order a Side Windows Kit, Cab Seals Kit and Special Applications Rear Window to completely enclose cab. Est. Install time: 3 hrs.	\$ _____
7214673	SPECIAL APPLICATIONS POLYCARBONATE REAR WINDOW KIT..... Provides added operator protection during some attachment applications. Includes ½" thick polycarbonate rear window. Must order a Side Windows Kit, Cab Seals Kit and Special Applications Front Door to completely enclose cab. Est. Install time: 0.5 hr.	\$ _____

Cab Accessories – Heat and Air Conditioning

7236389	AIR CONDITIONING KIT Loader must be equipped with Cab Enclosure with Heater. Est. Install time: 8 hrs.	\$ _____
7128484	HEATER KIT Cab Accessory Harness is required, see Cab Accessory Harness & Lower Interior Panels kit for details. Must also order heater plumbing kit and Deluxe Heater/Air Conditioning Headliner Kit. Est. Install time: 5 hrs. to install heater and plumbing kit	\$ _____
7236388	HEATER PLUMBING KIT Est. Install time: 5 hrs. to install heater and plumbing kit	\$ _____
7200657	LOWER AIR DUCT KIT Includes two additional air ducts to direct air flow towards the foot well and lower cab door area. Loader must be equipped with Cab Enclosure and Heater or Air Conditioning. Est. Install time: 1-3 hrs. (depends on loader model and s/n)	\$ _____

Cab Accessories – Other

_____	CAB ACCESSORY HARNESS & LOWER INTERIOR PANELS See Dealer Parts Department for the correct kit part number. This kit is needed for Base Cabs Only when field installing any of the following accessories; cab enclosure with heat or air conditioning, four-way flasher / turn signal kit, hydraulic bucket positioning, power Bob-Tach kit, rear wiper kit, rotating beacon kit, strobe light kit or radio. Includes Cab Accessory Harness and Lower Interior Panels. Need to order Deluxe Headliner Kit or Deluxe Heater/Air Conditioning, Headliner Kit & Cup Holder Kit to finish interior. Reference dealer parts department for the correct kit part number. Est. Install time: 5 hrs.	\$ _____
7167395	CUP HOLDER KIT..... Lower Interior Panels are required, see Cab Accessory Harness & Lower Interior Panels kit for details. Includes side and front cup holder. Est. Install time: 1 hr.	\$ _____
7227849	CAB SEALS KIT Includes bottom of cab and foot pod area seals. Needed to completely enclose the cab. Est. Install time: 2.5 hrs.	\$ _____
7170782	DELUXE CAB GAS SPRING KIT..... 3rd gas spring for enclosed cab. Est. Install time: 1 hr.	\$ _____

T550/T590/T595 (Tier 4) BOBCAT COMPACT TRACK LOADER

PART NUMBER DEALER INSTALLED ACCESSORIES – ORDER FROM PARTS DESCRIPTION

Cab Accessories – Other (continued)

7156253	DELUXE HEADLINER KIT Includes headliner with light and rear corner cab trim. Est. Install time: 1 hr.	\$ _____
7174171	DELUXE HEATER / AIR CONDITIONING HEADLINER KIT Includes Headliner with interior light, air conditioning/heater vents and rear corner cab trim. Needed to upgrade non-AC/Heater cab to include AC/Heat. Est. Install time: 1 hr.	\$ _____
7196560	FORESTRY WIPER KIT Loader must be equipped with Forestry Door; Reference P/N 7174127 Forestry Door or 7230523 Forestry Applications Kit for detail. Est. Install time: 1 hr.	\$ _____
7238900	HEPA FILTER KIT Est. Install time: 0.5 hr.	\$ _____
7240148	INTERMITTENT WIPER KIT Includes intermittent wiper switch, cover, harness and tie straps. Kit allows operator to adjust the speed of the wiper to match the operating conditions. Est. Install time: 1 hr.	\$ _____
6725946	REAR WINDOW EXTERNAL REMOVAL KIT Recommended for use with Loader Radio Remote Control kit. Est. Install time: 1 hr.	\$ _____
7225133	REAR WIPER KIT Cab Accessory Harness is required, see Cab Accessory Harness & Lower Interior Panels kit for details. If loader is not equipped with a Deluxe Headliner order Deluxe Headliner Kit and Cab Accessory Harness from Parts. Est. Install time: 4 hrs.	\$ _____
7172897	RESEAL PLUGS KIT Includes plugs to seal the cab and frame after the removal of the following: FOPS Kit, Single Point Lift Kit, Four Point Lift Kit, and Backhoe Attachment. Est. Install time: 1 hr.	\$ _____
7172903	WHITE DECAL KIT (CAB TOP) Applied to cab top to maintain a cooler temperature inside the operator's cab. Est. Install time: 0.5 hr.	\$ _____

Counterweight Kits

7129250	COUNTERWEIGHT KIT, 200 LBS (T550/T590) Includes (4) 50 pound weights that bolt to rear uprights of loader. See operator's manual for ROC increase. Not compatible with Quick-Tach Water Kit or Rear Stabilizers. Est. Install time: 1 hr.	\$ _____
----------------	---	----------

Electrical Accessories

_____	ATTACHMENT CONTROL KIT For complete listing of Attachment Control Kits, P/N's and Descriptions – Refer to Attachments Section of the Price Pages.	\$ _____
7169103	CAB ACCESSORY ADAPTER HARNESS For Loaders without Cab Accessory Harness. Needed for Strobe, Beacon and Four-Way Flasher. Est. Install Time: 0.5 hr.	\$ _____
7128338	FOUR-WAY FLASHER / TURN SIGNAL KIT Cab Accessory Harness or Cab Accessory Adapter Harness is required; Reference Cab Accessory Harness & Lower Interior Panels kit or Cab Accessory Adapter Harness for details. Est. Install time: 1 hr.	\$ _____
7129299	ROTATING BEACON KIT. Cab Accessory Harness or Cab Accessory Adapter Harness is required; Reference Cab Accessory Harness & Lower Interior Panels kit or Cab Accessory Adapter Harness for details. Est. Install time: 1 hr.	\$ _____
7129301	STROBE LIGHT KIT, AMBER Cab Accessory Harness or Cab Accessory Adapter Harness is required; Reference Cab Accessory Harness & Lower Interior Panels kit or Cab Accessory Adapter Harness for details. Est. Install time: 1 hr.	\$ _____
7256348	SIDE LIGHT KIT Includes two LED side lights. Est. Install time: 0.5 hr.	\$ _____

Engine Accessories

7239665	ENGINE BLOCK HEATER Est. Install time: 0.25 hrs.	\$ _____
----------------	--	----------

T550/T590/T595 (Tier 4) BOBCAT COMPACT TRACK LOADER

PART NUMBER DEALER INSTALLED ACCESSORIES – ORDER FROM PARTS DESCRIPTION

Hydraulic Accessories

7129447	HYDRAULIC BUCKET POSITIONING KIT (T550) Bucket Positioning helps the operator keep the same tilt position of the load during lifting. Cab Accessory Harness is required, see Cab Accessory Harness & Lower Interior Panels kit for details. Includes on/off switch. Est. Install time: 3 hrs.	\$ _____
7128442	HYDRAULIC BUCKET POSITIONING KIT (T590/T595) Bucket Positioning helps the operator keep the same tilt position of the load during lifting. Cab Accessory Harness is required, see Cab Accessory Harness & Lower Interior Panels kit for details. Includes on/off switch. Est. Install time: 3 hrs.	\$ _____
7208031	LIFT CYLINDER CUSHION PISTON (T590/T595) Softens the contact between the lift arms and mainframe reducing noise. Must also order Piston Nut p/n 6810539.	\$ _____
7229294	REAR AUXILIARY HYDRAULIC KIT Provides a flow of 8.5 GPM. Est. Install time: 10 hrs.	\$ _____

Instrumentation

7213928	DELUXE INSTRUMENT PANEL WITH KEYLESS START. Includes keyless start, feature lockouts, help screens, clock, job clock, system diagnostic capability and more. Est. Install time: 1 hr.	\$ _____
7213929	KEYLESS START PANEL KIT Allows operator to start the loader by entering a reprogrammable number code. Est. Install time: 1 hr.	\$ _____

Lift Kits

7161980	FOUR-POINT LIFT KIT (T550) Cannot be used on loaders equipped with Backhoe Mounting Kit. Est. Install time: 2 hrs.	\$ _____
7161979	FOUR-POINT LIFT KIT (T590/T595) Cannot be used on loaders equipped with Backhoe Mounting Kit. Est. Install time: 2 hrs.	\$ _____
7193579	SINGLE POINT LIFT KIT Est. Install time: 3 hrs.	\$ _____

Loader Guard Kits

7233421	ENGINE COMPARTMENT SEAL KIT (T590/T595) Kit includes cab/mainframe seal, tailgate seal, mainframe slot covers and lift cylinder boots. Not compatible with Rear Auxiliary Hydraulics or Rear Stabilizers. Est. Install time: 1 hr.	\$ _____
7246231	ENGINE COMPARTMENT SEAL KIT (T550) Kit includes cab/mainframe seal, tailgate seal, mainframe slot covers and lift cylinder boots. Not compatible with Rear Auxiliary Hydraulics or Rear Stabilizers. Est. Install time: 1 hr.	\$ _____
7129293	FOPS KIT Additional shield assembly for cab top. Meets ISO 3449, Level II Requirements. Est. Install time: 1.5 hrs.	\$ _____
7174128	REAR WORK LIGHTS GUARD KIT Est. Install time: 0.5 hr.	\$ _____
7174129	FRONT WORK LIGHTS GUARD KIT Est. Install time: 0.5 hr.	\$ _____
7250844	COUPLER GUARD KIT Est. Install time: 5 min.	\$ _____
7244920	MUFFLER GUARD KIT Est. Install time: 0.25 hr.	\$ _____
7249240	POWER BOBTACH GUARD KIT Est. Install time: 0.25 hr.	\$ _____
7203665	REAR BUMPER KIT Includes bolt-on Rubber Bumper and mounting hardware. Helps protect the rear of the loader from damage due to scraping or contact with objects in tight places. Est. Install time: 1 hr.	\$ _____
7222173	TILT CYLINDER SHIELD KIT Est. Install time: 0.5 hr.	\$ _____

T550/T590/T595 (Tier 4) BOBCAT COMPACT TRACK LOADER

DEALER INSTALLED ACCESSORIES – ORDER FROM PARTS

PART NUMBER	DESCRIPTION	PRICE
<u>Power Bob-Tach Kits</u>		
7310208	POWER BOB-TACH KIT Cab Accessory Harness is required, see Cab Accessory Harness & Lower Interior Panels kit for details. Must also order Power Bob-Tach Plumbing Kit. Est. Install time: 4 hrs. to install Power Bob-Tach Kit and Plumbing Kit.	\$ _____
7310205	POWER BOB-TACH PLUMBING KIT (T550) Est. Install time: 4 hrs. to install Power Bob-Tach Kit and Plumbing Kit.	\$ _____
7310206	POWER BOB-TACH PLUMBING KIT (T590/T595) Est. Install time: 4 hrs. to install Power Bob-Tach Kit and Plumbing Kit.	\$ _____
<u>Radio</u>		
6988435	RADIO KIT Includes weatherproof AM/FM/NOAA Weather Band Radio, Radio Mounting Bracket, Speakers, Antenna, and Installation Hardware. Works with MP3 or other portable music player. Cab Accessory Harness is required, see Cab Accessory Harness & Lower Interior Panels kit for details. Est. Install time: 3 hrs.	\$ _____
6676108	RADIO HEADPHONES	\$ _____
<u>Rear Camera Kit</u>		
7329670	REAR CAMERA KIT Includes camera, display and required parts for complete installation. Est. Install time: 4 hrs.	\$ _____
<u>Remote Control Kits</u>		
7185234	LOADER RADIO REMOTE CONTROL KIT Allows an operator to start/stop the engine, operate the drive system and control the lift, tilt and auxiliary hydraulic functions remotely using a Radio Transmitter. The operator must maintain visual contact with the loader and the loader's path of travel. Available for loaders equipped with Selectable Joystick Controls (SJC) or All Wheel Steer Loaders. Requires version 57 software or newer. Est. Install time: 0.5 hr.	\$ _____
6986516	LOADER RADIO REMOTE OPERATOR TRAINING KIT	\$ _____
<u>Reversing Fan Kits</u>		
7302979	REVERSING FAN KIT Temporarily reverses cooling fan direction to blow dust and small debris from the radiator and rear screens. Includes three operating modes: Automatic, Momentary and OFF. Cab Accessory Harness is required, see Cab Accessory Harness & Lower Interior Panels kit for details. Est. Install Time: 3 hrs.	\$ _____
<u>Ride Control Kits</u>		
7244604	RIDE CONTROL KIT - MANUAL Provides a smoother ride by cushioning the lift arms when traveling over rough terrain. Est. Install time: 1.5 hrs.	\$ _____
7306287	RIDE CONTROL KIT - AUTO Provides a smoother ride by cushioning the lift arms when traveling over rough terrain. Includes on/off switch inside of cab. Est. Install time: 4 hrs.	\$ _____

T550/T590/T595 (Tier 4) BOBCAT COMPACT TRACK LOADER

PART NUMBER DEALER INSTALLED ACCESSORIES – ORDER FROM PARTS DESCRIPTION

Seats & Seat Belts

7129303	SEAT BELT KIT, 3" WIDE For use with Suspension Seat only. Includes 3" retractable lap belt. Est. Install time: 0.5 hr.	\$ _____
7128405	SEAT BELT KIT, 3-POINT For use with Suspension Seat only. Includes 2" shoulder belt and 2" lap belt. Both are retractable. Est. Install time: 0.5 hr.	\$ _____
7169480	SEAT BELT KIT-3", 3-POINT For use with Suspension Seat only. Includes 2" shoulder belt and 3" lap belt. Both are retractable. Est. Install time: 0.5 hr.	\$ _____
7183366	SUSPENSION SEAT, AIR RIDE Vinyl material. Must also order a seat belt kit unless previously equipped with suspension seat. Est. Install time: 1 hr.	\$ _____
7312807	CLOTH HEATED AIR RIDE SEAT Includes Heat on/off switch on the back of the seat. The seat is not compatible with M-Series loaders and select M2-Series loaders. See Dealer Parts Department for the correct M2-Series loader serial number breaks.	\$ _____

Sound Reduction Kits

7207379	SOUND REDUCTION KIT Includes insulating materials and hydraulic muffler to reduce sound levels at the operator's ear and for bystanders. Est. Install time: 2 hrs.	\$ _____
7207382	DELUXE SOUND KIT FOR STANDARD OR ACS CONTROLS Includes foot pod insulating materials to reduce sound levels at the operator's ear. Est. Install time: 1 hr.	\$ _____
7207383	DELUXE SOUND KIT FOR SJC CONTROLS Includes foot pod insulating materials to reduce sound levels at the operator's ear. Est. Install time: 1 hr.	\$ _____

Track Accessories

7159546	WINTER TRACK KIT Improves traction on ice and snow. Must order quantity of two tracks for complete installation. Est. Install time: 1.5 hrs. to remove and install tracks	\$ _____
----------------	--	----------

Training Kits

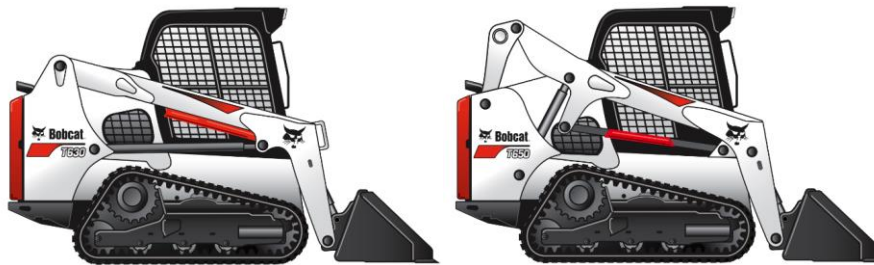
6901726	BOBCAT LOADER OPERATOR TRAINING KIT	\$ _____
6900641	BOBCAT LOADER SERVICE TRAINING KIT	\$ _____
6904762	BOBCAT OPERATOR SAFETY DVD Includes all of the 10-minute operator safety videos in both English and Spanish.	\$ _____

Other Accessories

7243539	AIR DEFLECTOR KIT Est. Install time: 0.5 hr.	\$ _____
7129307	FIRE EXTINGUISHER KIT Est. Install time: 0.5 hr.	\$ _____
7232264	HP ASPIRATION KIT Est. Install time: 0.5 hr.	\$ _____
7257869	LOADER WEIGHLOG SCALE KIT Measures hydraulic pressure at a specific position during the lifting cycle for either static or dynamic weighing. The weighlog kit is not a certified scale. Please see Bobcat Parts Sales & Merchandising Manual for additional details. Est. Install time: 4 hrs.	\$ _____
7023550	LOCKING FUEL CAP Includes a Black Locking Fuel Cap that is keyed the same as the loader. Key is Not included. Additional locking fuel cap options are available through parts.	\$ _____
7128403	TAILGATE LOCK KIT Est. Install time: 0.5 hr.	\$ _____

T630/T650 (Tier 4)

BOBCAT COMPACT TRACK LOADER



STANDARD EQUIPMENT

74 HP Turbo Tier 4 Diesel Engine
 Auxiliary Hydraulics: Variable Flow
 Backup Alarm
 Bob-Tach
 Bobcat Interlock Control System (BICS™)
 Controls: Bobcat Standard
 Cylinder Cushioning – Lift, Tilt
 Engine/Hydraulic Systems Shutdown
 Glow Plugs (Automatically Activated)
 Horn
 Instrumentation: Engine Temperature & Fuel
 Gauges, Hourmeter, RPM and Warning Lights
 Lift Arm Support
 Lift Path: Radius (T630), Vertical (T650)
 Lights, Front & Rear

Operator Cab

- Includes: Adjustable Suspension Seat, Top & Rear Windows, Seat Bar, Seat Belt
- Roll Over Protective Structure (ROPS) meets SAE-J1040 & ISO 3471
- Falling Object Protective Structure (FOPS) meets SAE-J1043 & ISO 3449, Level I; (Level II is available through Bobcat Parts)

Parking Brake – Spring Applied, Pressure Released (SAPR)
 Solid Mounted Carriage with 4 Rollers
 Spark Arrestor Exhaust System
 Tracks: Rubber, 12.6" Wide

QUICK SPECS

	<u>T630</u>	<u>T650</u>
Rated Operating Capacity-35% of Tipping Load*	2,100 lbs.	2,570 lbs.
• with Roller Suspension Carriage	2,000 lbs.	2,470 lbs.
Operating Capacity- 50% of Tipping load	3,000 lbs.	3,670 lbs.
Tipping Load	6,000 lbs.	7,343 lbs.
Engine Model	2.4L Bobcat Engine	2.4L Bobcat Engine
Engine Fuel	Diesel	Diesel
Engine Cooling	Liquid	Liquid
Horsepower	74	74
Hydraulic Pump Capacity – Standard Flow	23 GPM	23 GPM
Hydraulic Pump Capacity – High Flow (optional)	30.5 GPM	30.5 GPM
Travel Speed	6.2 MPH	6.2 MPH
Travel Speed – 2 Speed Option	6.2/10.0 MPH	6.2/10.0 MPH
Operating Weight	8,555 lbs.	9,113 lbs.
• with Roller Suspension Carriage	8,748 lbs.	9,339 lbs.
Shipping Weight	7,632 lbs.	8,190 lbs.
Cab Height	81.3"	81.3"
Width (w/out Attachment)	72.9"	72.9"
Width with Wide Track Option (w/out Attachment)	78.0"	78.0"
Length (w/out Attachment)	108.4"	108.4"
Ground Contact Length	58.5"	58.5"
Reach at Maximum Height	24.1"	34.2"
Height to Hinge Pin	121.0"	124.0"

T630/T650 (Tier 4)

BOBCAT COMPACT TRACK LOADER

PART NUMBER	COMPACT TRACK LOADER	SLP IN US \$
-------------	----------------------	--------------

M0267	T630 COMPACT TRACK LOADER (EQUIPPED WITH T4 ENGINE)	\$59,704
M0271	T650 COMPACT TRACK LOADER (EQUIPPED WITH T4 ENGINE)	\$61,993

PART NUMBER	AIR CONDITIONED/HEATED CAB PACKAGES	SLP IN US \$
-------------	-------------------------------------	--------------

M__-P01-A91	A91 OPTION PACKAGE	\$11,410
M__-P01-A71	A71 OPTION PACKAGE	\$6,875
M__-P01-A51	A51 OPTION PACKAGE	\$5,292

<u>A51</u>	<u>A71</u>	<u>A91</u>
Enclosed Cab with AC/Heat Cab Accessories Package* Power Bob-Tach	Enclosed Cab with AC/Heat Cab Accessories Package* Power Bob-Tach Sound Reduction Deluxe Instrument Panel with Keyless Start Attachment Control Kit	Enclosed Cab with AC/Heat Cab Accessories Package* Power Bob-Tach Sound Reduction Deluxe Instrument Panel with Keyless Start Attachment Control Kit High Flow Hydraulics Two Speed w/ 3-Point Seat Belt Hydraulic Bucket Positioning

PART NUMBER	OPEN CAB PACKAGES	SLP IN US \$
-------------	-------------------	--------------

M__-P01-O51	O51 OPTION PACKAGE	\$1,379
-------------	--------------------------	---------

<u>O51</u>
Cab Accessories Package* Power Bob-Tach

**Cab Accessories Package: Deluxe Headliner with Dome Light, Rear Cab Corner Trim, Cab Accessory Harness, Power Port, Lower Interior Panels with Storage Compartments and Cup Holder.*

T630/T650 (Tier 4)

BOBCAT COMPACT TRACK LOADER

PART NUMBER	DESCRIPTION	FACTORY INSTALLED OPTIONS	SLP IN US \$
-------------	-------------	---------------------------	--------------

Control Options

M__-R01-C03	ADVANCED CONTROL SYSTEM (ACS) [DISCONTINUED].....		\$2,297
	ACS allows operator to select either hand or foot control of lift and tilt functions. <i>*The Cab Accessories Package is required.</i>		
M__-R01-C04	SELECTABLE JOYSTICK CONTROL (SJC)		\$945
	Features include: Selectable patterns (ISO or H-Pattern), Auto Idle, Horsepower Management, Speed Management, Drive Response, Drift Compensation and Foot Pedal for Engine Speed Control. <i>*The Cab Accessories Package is required.</i>		

Individual Option Requirements

NOTE: *The options may require additional equipment, see details below. If the required equipment is not included in a Cab Package the Bobcat ordering systems will automatically add the equipment to the order.*

CAB ACCESSORIES PACKAGE

Required for Reversing Fan, Hydraulic Bucket Positioning, Automatic Ride Control, ACS and SJC. The Cab Accessories Package is included in all Cab Packages. If a Cab Package is not ordered, you must add

\$495

7-PIN ATTACHMENT CONTROL KIT

Required for High Flow Hydraulics. The 7-Pin Attachment Control Kit is included in the A71 and A91 Cab Packages, if one of those Cab Packages is not ordered, you must add

\$245

Individual Options

The options may require additional equipment for operation, see option requirements above for details.

M__-R03-C03	HIGH FLOW HYDRAULICS		\$2,246
	Provides 30.5 GPM and 3500 PSI for attachment operation. The 7 pin attachment control kit is required.		
M__-R04-C02	TWO SPEED		\$2,190
	Includes 2-speed motors and 3-Point Seat Belt. Low Travel Speed 6.1 MPH, High Travel Speed 10.7 MPH.		
M__-R11-C02	HYDRAULIC BUCKET POSITIONING		\$558
	Bucket Positioning helps the operator keep the same tilt position of the load during lifting. Includes on/off switch.		
M__-R05-C11	CLOTH HEATED AIR RIDE SUSPENSION SEAT		\$475
	Includes Heat on/off switch on the back of the seat. Must order an A or O cab package.		
M__-R26-C02	RADIO.....		\$498
	Includes weatherproof AM/FM/NOAA Weather Band Radio, Speakers, and Antenna. Works with MP3 or other portable music player. Must order an A, H or O cab package.		
M__-R32-C02	REVERSING FAN		\$616
	Temporarily reverses the cooling fan direction to blow dust and small debris from the radiator and rear screens. Includes three operating modes: Automatic, Momentary, & OFF. The Cab Accessories Package is required. See NOTE above.		
M__-R33-C02	AUTOMATIC RIDE CONTROL		\$741
	Automatically activates by detecting increased hydraulic lift arm pressure when the loader is carrying material. Includes on/off switch. The Cab Accessories Package is required. See NOTE above.		

Tracks

M__-R09-C02	17.7" RUBBER TRACKS		\$1,628
	Compatible with Solid Mounted or Roller Suspension Carriages. Loader width is 78.0"		
M__-R21-C11	ROLLER SUSPENSION CARRIAGE [MUST ORDER TWO SPEED]		\$1,785
	Includes Solid Mounted undercarriage and 4 Rollers with Leaf Spring style suspension. Compatible with 12.6" tracks (Loader width 73.4") or 17.7" tracks (Loader width 78.0"). <i>Roller suspension carriage is not available with single speed</i>		

T740 (Tier 4)

BOBCAT COMPACT TRACK LOADER



STANDARD EQUIPMENT

- | | |
|---|---|
| <p>74.0 HP Turbo Tier 4 Diesel Engine
 Air Intake Heater (Automatically Activated)
 Auxiliary Hydraulics: Variable Flow
 Backup Alarm
 Bob-Tach
 Bobcat Interlock Control System (BICS™)
 Controls: Bobcat Standard Controls with Power Assist
 Cylinder Cushioning – Lift, Tilt
 Engine/Hydraulic Systems Shutdown
 Horn
 Instrumentation: Engine Temperature & Fuel Gauges,
 Hourmeter, RPM and Warning Lights
 Lift Arm Support
 Lift Path: Vertical
 Lights, Front & Rear</p> | <p>Operator Cab</p> <ul style="list-style-type: none"> • Includes: Adjustable Suspension Seat, Top & Rear Windows, Seat Bar & Seat Belt • Roll Over Protective Structure (ROPS) meets SAE-J1040 & ISO 3471 • Falling Object Protective Structure (FOPS) meets SAE-J1043 & ISO 3449, Level I; (Level II is available through Bobcat Parts) <p>Parking Brake – Spring Applied, Pressure Released (SAPR)
 Solid Mounted Carriage with 5 Rollers
 Tracks: Rubber, 17.7" Wide</p> |
|---|---|

QUICK SPECS

	<u>T740</u>
Rated Operating Capacity-35% of Tipping Load*	3,200 lbs.
• With Roller Suspension Carriage	3,100 lbs.
Operating Capacity- 50% of Tipping load	4,571 lbs.
Tipping Load	9,143 lbs.
Engine Model	3.4L Bobcat Engine
Engine Fuel	Diesel
Engine Cooling	Liquid
Horsepower	74.0
Hydraulic Pump Capacity-Standard Flow	23.0 GPM
Hydraulic Pump Capacity-High Flow (Optional)	30.5 GPM
Travel Speed	6.6 MPH
Travel Speed – 2 Speed Option	6.1/10.7 MPH
Operating Weight	10,263 lbs.
• With Roller Suspension Carriage	10,417 lbs.
Shipping Weight	9,347 lbs.
Cab Height	81.3"
Width (w/out Attachment)	78.0"
Length (w/out Attachment)	114.3"
Ground Contact Length	63.7"
Reach at Maximum Height	33.6"
Height to Hinge Pin	132.0"

T740 (Tier 4)

BOBCAT COMPACT TRACK LOADER

PART NUMBER	COMPACT TRACK LOADER	SLP IN US \$
-------------	----------------------	--------------

M0277	T740 COMPACT TRACK LOADER (EQUIPPED WITH T4 ENGINE)	\$68,527
-------	---	----------

PART NUMBER	AIR CONDITIONED/HEATED CAB PACKAGES	SLP IN US \$
-------------	-------------------------------------	--------------

M__-P01-A91	A91 OPTION PACKAGE	\$11,410
M__-P01-A71	A71 OPTION PACKAGE	\$6,875
M__-P01-A51	A51 OPTION PACKAGE	\$5,292

<u>A51</u>	<u>A71</u>	<u>A91</u>
Enclosed Cab with AC/Heat Cab Accessories Package* Power Bob-Tach	Enclosed Cab with AC/Heat Cab Accessories Package* Power Bob-Tach Sound Reduction Deluxe Instrument Panel with Keyless Start Attachment Control Kit	Enclosed Cab with AC/Heat Cab Accessories Package* Power Bob-Tach Sound Reduction Deluxe Instrument Panel with Keyless Start Attachment Control Kit High Flow Hydraulics Two Speed w/ 3-Point Seat Belt Hydraulic Bucket Positioning

PART NUMBER	OPEN CAB PACKAGES	SLP IN US \$
-------------	-------------------	--------------

M__-P01-O51	O51 OPTION PACKAGE	\$1,379
-------------	--------------------------	---------

O51
 Cab Accessories Package*
 Power Bob-Tach

**Cab Accessories Package: Deluxe Headliner with Dome Light, Cab Accessory Harness, Power Port, Lower Interior Panels with Storage Compartments and Cup Holder.*

T740 (Tier 4)

BOBCAT COMPACT TRACK LOADER

PART NUMBER	DESCRIPTION	FACTORY INSTALLED OPTIONS	SLP IN US \$
-------------	-------------	---------------------------	--------------

Control Options

M__-R01-C04	SELECTABLE JOYSTICK CONTROL (SJC) Features include: Selectable patterns (ISO or H-Pattern), Auto Idle, Horsepower Management, Speed Management, Drive Response, Drift Compensation and Foot Pedal for Engine Speed Control.	\$945
--------------------	---	--------------

Individual Option Requirements

NOTE: *The following options may require additional equipment, see details below. If the required equipment is not included in a Cab Package the Bobcat ordering systems will automatically add the equipment to the order.*

7-PIN ATTACHMENT CONTROL KIT

Required for High Flow Hydraulics. The 7-Pin Attachment Control Kit is included in the A71 and A91 Cab Packages, if one of those Cab Packages is not ordered, you must add **\$245**

Individual Options

The options may require additional equipment for operation, see option requirements above for details.

M__-R03-C03	HIGH FLOW HYDRAULICS Provides 30.5 GPM and 3500 PSI for attachment operation. The 7 pin attachment control kit is required.	\$2,246
M__-R04-C02	TWO SPEED Includes 2-speed motors and 3-Point Seat Belt. Low Travel Speed 6.1 MPH, High Travel Speed 10.7 MPH.	\$2,190
M__-R11-C02	HYDRAULIC BUCKET POSITIONING Bucket Positioning helps the operator keep the same tilt of the load during lifting. Includes On/Off switch.	\$558
M__-R05-C11	CLOTH HEATED AIR RIDE SUSPENSION SEAT Includes Heat on/off switch on the back of the seat. Must order an A or O cab package.	\$475
M__-R26-C02	RADIO Includes weatherproof AM/FM/NOAA Weather Band Radio, Speakers, and Antenna. Works with MP3 or other portable music player. Must order an A or O cab package.	\$498
M__-R32-C02	REVERSING FAN Temporarily reverses the cooling fan direction to blow dust and small debris from the radiator and rear screens. Includes three operating modes: Automatic, Momentary, & OFF.	\$616
M__-R33-C02	AUTOMATIC RIDE CONTROL Automatically activates by detecting increased hydraulic lift arm pressure when the loader is carrying material. Includes on/off switch.	\$741

Tracks

M__-R21-C11	ROLLER SUSPENSION CARRIAGE [MUST ORDER TWO SPEED] Includes Solid Mounted undercarriage and 4 Rollers with Leaf Spring style suspension. Compatible with 12.6" tracks (Loader width 73.4") or 17.7" tracks (Loader width 78.0"). <i>Roller suspension carriage is not available with single speed</i>	\$1,785
--------------------	--	----------------

NOTE: **12.6" RUBBER TRACKS (AVAILABLE FROM PARTS)**
 Changes width of T750 and T770 from 78 to 72.9 inches. Must order quantity of 2 tracks.
 Est. Install time: 1.5 hrs.

T770 (Tier 4) BOBCAT COMPACT TRACK LOADER



STANDARD EQUIPMENT

- | | |
|---|---|
| <p>92.0 HP Turbo Tier 4 Diesel Engine (T770)
 Air Intake Heater (Automatically Activated)
 Auxiliary Hydraulics: Variable Flow
 Backup Alarm
 Bob-Tach
 Bobcat Interlock Control System (BICS™)
 Controls: Bobcat Standard
 Cylinder Cushioning – Lift, Tilt
 Engine/Hydraulic Systems Shutdown
 Horn
 Instrumentation: Engine Temperature & Fuel Gauges,
 Hourmeter, RPM and Warning Lights
 Lift Arm Support
 Lift Path: Vertical
 Lights, Front & Rear</p> | <p>Operator Cab</p> <ul style="list-style-type: none"> • Includes: Adjustable Suspension Seat, Top & Rear Windows, Seat Bar & Seat Belt • Roll Over Protective Structure (ROPS) meets SAE-J1040 & ISO 3471 • Falling Object Protective Structure (FOPS) meets SAE-J1043 & ISO 3449, Level I; (Level II is available through Bobcat Parts) <p>Parking Brake – Spring Applied, Pressure Released (SAPR)
 Solid Mounted Carriage with 5 Rollers
 Tracks: Rubber, 17.7" Wide</p> |
|---|---|

QUICK SPECS

	<u>T770</u>
Rated Operating Capacity-35% of Tipping Load*	3,475 lbs.
• With Roller Suspension Carriage	3,325 lbs.
Operating Capacity- 50% of Tipping load.....	4,960 lbs.
Tipping Load	9,929 lbs.
Engine Model	3.4L Bobcat Engine
Engine Fuel.....	Diesel
Engine Cooling	Liquid
Horsepower.....	92.0
Hydraulic Pump Capacity-Standard Flow	23 GPM
Hydraulic Pump Capacity-High Flow (Optional).....	36.6 GPM
Travel Speed.....	6.6 MPH
Travel Speed – 2 Speed Option	6.1/10.7 MPH
Operating Weight	10,465 lbs.
• With Roller Suspension Carriage	10,573 lbs.
Shipping Weight	9,534 lbs.
Cab Height.....	81.3"
Width (w/out Attachment).....	78.0"
Length (w/out Attachment).....	114.3"
Ground Contact Length	63.7"
Reach at Maximum Height.....	33.6"
Height to Hinge Pin	132.0"

T770 (Tier 4) BOBCAT COMPACT TRACK LOADER

PART NUMBER	DESCRIPTION	SLP IN US \$
-------------	-------------	--------------

M0285	T770 COMPACT TRACK LOADER (EQUIPPED WITH T4 ENGINE)	\$73,101
-------	---	----------

PART NUMBER	DESCRIPTION	SLP IN US \$
-------------	-------------	--------------

M__-P01-A71	A71 OPTION PACKAGE	\$10,670
M__-P01-A61	A61 OPTION PACKAGE	\$7,139

<u>A61</u>	<u>A71</u>
Enclosed Cab with AC/Heat Cab Accessories Package* Power Bob-Tach Two-Speed w/ 3-Point Seat Belt Hydraulic Bucket Positioning	Enclosed Cab with AC/Heat Cab Accessories Package* Power Bob-Tach Sound Reduction Deluxe Instrument Panel with Keyless Start Attachment Control Kit

PART NUMBER	DESCRIPTION	SLP IN US \$
-------------	-------------	--------------

M__-P01-O61	O61 OPTION PACKAGE	\$1,842
-------------	--------------------------	---------

O61
 Cab Accessories Package*
 Power Bob-Tach
 Two-Speed w/ 3-Point Seat Belt
 Hydraulic Bucket Positioning

**Cab Accessories Package: Deluxe Headliner with Dome Light, Cab Accessory Harness, Power Port, Lower Interior Panels with Storage Compartments and Cup Holder.*

T770 (Tier 4) BOBCAT COMPACT TRACK LOADER

PART NUMBER	DESCRIPTION	FACTORY INSTALLED OPTIONS	SLP IN US \$
-------------	-------------	---------------------------	--------------

Control Options

M__-R01-C03	ADVANCED CONTROL SYSTEM (ACS) [DISCONTINUED]..... ACS allows operator to select either hand or foot control of lift and tilt functions. <i>*The Cab Accessories Package is required.</i>		\$2,297
M__-R01-C04	SELECTABLE JOYSTICK CONTROL (SJC) Features include: Selectable patterns (ISO or H-Pattern), Auto Idle, Horsepower Management, Speed Management, Drive Response, Drift Compensation and Foot Pedal for Engine Speed Control. <i>*The Cab Accessories Package is required.</i>		\$945

Individual Option Requirements

NOTE: *The following options may require additional equipment, see details below. If the required equipment is not included in a Cab Package the Bobcat ordering systems will automatically add the equipment to the order.*

CAB ACCESSORIES PACKAGE

Required for Reversing Fan, Hydraulic Bucket Positioning, Automatic Ride Control, ACS, & SJC. The Cab Accessories Package is included in all Cab Packages. If a Cab Package is not ordered, you must add \$495

7-PIN ATTACHMENT CONTROL KIT

Required for High Flow Hydraulics. The 7-Pin Attachment Control Kit is included in the A71 and A91 Cab Packages, if one of those Cab Packages is not ordered, you must add \$245

Individual Options

The options may require additional equipment for operation, see option requirements above for details.

M__-R03-C03	HIGH FLOW HYDRAULICS Provides 36.6 GPM and 3500 PSI for attachment operation. The 7 pin attachment control kit is required.		\$2,246
M__-R04-C02	TWO SPEED..... Includes 2-speed motors and 3-Point Seat Belt. Low Travel Speed 6.1 MPH, High Travel Speed 10.7 MPH.		\$2,190
M__-R11-C02	HYDRAULIC BUCKET POSITIONING Bucket Positioning helps the operator keep the same tilt of the load during lifting. Includes On/Off switch. Cab Accessories Package required.		\$558
M__-R05-C11	CLOTH HEATED AIR RIDE SUSPENSION SEAT Includes Heat on/off switch on the back of the seat. Must order an A or O cab package.		\$475
M__-R26-C02	RADIO..... Includes weatherproof AM/FM/NOAA Weather Band Radio, Speakers, and Antenna. Works with MP3 or other portable music player. Must order an A or O cab package.		\$498
M__-R32-C02	REVERSING FAN Temporarily reverses the cooling fan direction to blow dust and small debris from the radiator and rear screens. Includes three operating modes: Automatic, Momentary, & OFF. The Cab Accessories Package is required. See NOTE above.		\$616
M__-R33-C02	AUTOMATIC RIDE CONTROL..... Automatically activates by detecting increased hydraulic lift arm pressure when the loader is carrying material. Includes on/off switch. The Cab Accessories Package is required. See NOTE above.		\$741

T770 (Tier 4)

BOBCAT COMPACT TRACK LOADER

PART NUMBER	DESCRIPTION	FACTORY INSTALLED OPTIONS	SLP IN US \$
-------------	-------------	---------------------------	--------------

Tracks

M__-R21-C11	ROLLER SUSPENSION CARRIAGE [MUST ORDER TWO SPEED] Includes Solid Mounted undercarriage and 4 Rollers with Leaf Spring style suspension. Compatible with 12.6" tracks (Loader width 73.4") or 17.7" tracks (Loader width 78.0"). <i>Roller suspension carriage is not available with single speed</i>	\$1,785
--------------------	--	----------------

NOTE: **12.6" RUBBER TRACKS (AVAILABLE FROM PARTS)**
 Changes width of T750 and T770 from 78 to 72.9 inches. Must order quantity of 2 tracks.
 Est. Install time: 1.5 hrs.

PART NUMBER	DESCRIPTION	DEALER INSTALLED ACCESSORIES – ORDER FROM SALES	SLP IN US \$
-------------	-------------	---	--------------

Cab Accessories

7257723	FORESTRY APPLICATIONS KIT – TIER 4 T770 Kit is required to operate Forestry Cutter and provides operator and machine protection. For kit contents, see Forestry Cutter in Attachments Section. Not compatible with Rear Auxiliary Hydraulics. Must also order Engine Compartment Seal Kit from parts. Est. Install time: 6.5 hrs.	\$ _____
----------------	---	----------

Note: Forestry Wiper Kit (P/N 7196560) is available for the Forestry Applications Kit, order from parts.

T870 Torsion (Tier 4)

BOBCAT COMPACT TRACK LOADERS



STANDARD EQUIPMENT

- | | |
|---|---|
| <p>100 HP Turbo Tier 4 Diesel Engine
 2-Speed Travel
 Air Intake Heater (Automatically Activated)
 Auxiliary Hydraulics: Variable Flow
 Backup Alarm
 Bob-Tach
 Bobcat Interlock Control System (BICS™)
 Controls: Bobcat Standard Controls with Power Assist
 Cylinder Cushioning – Lift, Tilt
 Enclosed Cab with Air Conditioning & Heat
 Engine/Hydraulic Systems Shutdown
 Horn
 Instrumentation: Engine Temperature & Fuel Gauges, Hourmeter, RPM and Warning Lights
 Lift Arm Support</p> | <p>Lift Path: Vertical
 Lights, Front & Rear
 Operator Cab</p> <ul style="list-style-type: none"> • Includes: Adjustable Suspension Seat, Top & Rear Windows, Seat Bar & Seat Belt • Roll Over Protective Structure (ROPS) meets SAE-J1040 & ISO 3471 • Falling Object Protective Structure (FOPS) meets SAE-J1043 & ISO 3449, Level I; (Level II is available through Bobcat Parts) <p>Parking Brake – Spring Applied, Pressure Released (SAPR)
 Power Bob-Tach
 5 Link Torsion Suspension with 5 Rollers
 Hydraulic Track Tensioning
 Tracks: Rubber, 17.7" Wide</p> |
|---|---|

QUICK SPECS

Rated Operating Capacity-35% of Tipping Load	3,650 lbs.
Operating Capacity - 50 % of Tipping Load	5,200 lbs.
Tipping Load	10,430 lbs.
Engine Model	3.4L Bobcat Engine
Engine Fuel.....	Diesel
Engine Cooling	Liquid
Horsepower.....	100
Hydraulic Pump Capacity – Standard Flow.....	23.0 GPM
Hydraulic Pump Capacity – High Flow (Optional)	36.6 GPM
Travel Speed – Low.....	6.5 MPH
Travel Speed – High.....	11.4 MPH
Operating Weight	12,925 lbs.
Shipping Weight.....	11,749 lbs.
Cab Height.....	83.6"
Width (w/out Attachment).....	82.8"
Length (w/out Attachment).....	119.3"
Ground Contact Length	70.2 "
Reach at Maximum Height.....	36.5"
Height to Hinge Pin	144"

T870 Torsion (Tier 4)

BOBCAT COMPACT TRACK LOADERS

PART NUMBER	COMPACT TRACK LOADER	SLP IN US \$
-------------	----------------------	--------------

M0293	T870 COMPACT TRACK LOADER (EQUIPPED WITH T4 ENGINE).....	\$90,952
-------	--	----------

PART NUMBER	AIR CONDITIONED/HEATED CAB PACKAGES	SLP IN US \$
-------------	-------------------------------------	--------------

M0293-P01-A91	A91 OPTION PACKAGE	\$4,070
M0293-P01-A71	A71 OPTION PACKAGE	\$1,433

<p>A71</p> <p>Cab Accessories Package* Sound Reduction Deluxe Instrument Panel with Keyless Start Attachment Control Kit</p>	<p>A91</p> <p>Cab Accessories Package* Sound Reduction Deluxe Instrument Panel with Keyless Start Attachment Control Kit High Flow Hydraulics Hydraulic Bucket Positioning</p>
---	---

**Cab Accessories Package: Deluxe Headliner with Dome Light, Cab Accessory Harness, Power Port, Lower Interior Panels with Storage Compartments and Cup Holder.*

PART NUMBER	FACTORY INSTALLED OPTIONS	SLP IN US \$
-------------	---------------------------	--------------

Control Options

M0295-R01-C04	SELECTABLE JOYSTICK CONTROL (SJC) Features include: Selectable patterns (ISO or H-Pattern), Auto Idle, Horsepower Management, Speed Management, Drive Response, Drift Compensation and Foot Pedal for Engine Speed Control.	\$945
---------------	---	-------

Individual Option Requirements

NOTE: *The following options may require additional equipment, see details below. If the required equipment is not included in a Cab Package the Bobcat ordering systems will automatically add the equipment to the order.*

7-PIN ATTACHMENT CONTROL KIT

Required for High Flow Hydraulics. The 7-Pin Attachment Control Kit is included in the A71 and A91 Cab Packages, if one of those Cab Packages is not ordered, you must add \$245

Individual Options

The options may require additional equipment for operation, see option requirements above for details.

M0293-R03-C03	HIGH FLOW HYDRAULICS Provides 36.6 GPM and 3500 PSI for attachment operation. The 7 pin attachment control kit is required.	\$2,246
M0293-R11-C02	HYDRAULIC BUCKET POSITIONING Bucket Positioning helps the operator keep the same tilt of the load during lifting. Includes On/Off switch.	\$558
M0293-R05-C11	CLOTH HEATED AIR RIDE SUSPENSION SEAT Includes Heat on/off switch on the back of the seat. Must order an A or O cab package.	\$475
M0293-R26-C02	RADIO Includes weatherproof AM/FM/NOAA Weather Band Radio, Speakers, and Antenna. Works with MP3 or other portable music player. Must order an A, H or O Cab Package.	\$498
M0293-R32-C02	REVERSING FAN Temporarily reverses the cooling fan direction to blow dust and small debris from the radiator and rear screens. Includes three operating modes: Automatic, Momentary, & OFF.	\$616
M0293-R33-C02	AUTOMATIC RIDE CONTROL Automatically activates by detecting increased hydraulic lift arm pressure when the loader is carrying material. Includes on/off switch.	\$741

T870 Torsion (Tier 4)

BOBCAT COMPACT TRACK LOADERS

PART NUMBER	DEALER INSTALLED ACCESSORIES – ORDER FROM SALES DESCRIPTION	SLP IN US \$
-------------	--	--------------

Cab Accessories

7257723	<p>FORESTRY APPLICATIONS KIT – TIER 4</p> <p>Kit is required to operate Forestry Cutter and provides operator and machine protection. For kit contents, see Forestry Cutter in Attachments Section. Not compatible with Rear Auxiliary Hydraulics. Must also order Engine Compartment Seal Kit from parts. Est. Install time: 6.5 hrs.</p>	\$ _____
Note:	Forestry Wiper Kit (P/N 7196560) is available for the Forestry Applications Kit, order from parts.	

T630/T650/T740/T770/T870

BOBCAT COMPACT TRACK LOADERS

PART NUMBER	DEALER INSTALLED ACCESSORIES – ORDER FROM PARTS DESCRIPTION
-------------	---

Part numbers for kits in this section are current as of October 2016 and pertain to current loader models as of that date. To ensure having the correct Part Number for a Dealer Installed Accessory, obtain the loader model and serial number and check with Dealer Parts Department. For the most current Dealer Installed Accessories pricing, refer to BobQuote or Dealer Parts Department.

Cab Accessories – Enclosures, Doors, Windows

7128393	CAB ENCLOSURE DOOR KIT..... \$ _____ Cab Accessory Harness is required, see Cab Accessory Harness & Lower Interior Panels kit for details. Includes Front Door with Sensor Switch and Wiper/Washer. Must also order Side Windows Kit and Cab Seals Kit to completely enclose cab. Est. Install time: 3.5 hrs.
7186723	FOPS WINDOW KIT \$ _____ Est. Install time: 10 min.
7174127	FORESTRY DOOR KIT \$ _____ Cab Accessory Harness is required, see Cab Accessory Harness & Lower Interior Panels kit for details. Est. Install time: 2 hrs.
7182335	SIDE WINDOWS LEXAN KIT..... \$ _____ Includes 2 Sliding Side Lexan Windows. Est. Install time: 1 hr.
7128342	SLIDING SIDE WINDOWS KIT \$ _____ Includes 2 Sliding Side Windows. Must also order Cab Enclosure Door Kit to completely enclose cab. Est. Install time: 1 hr.
7128395	SPECIAL APPLICATIONS POLYCARBONATE DOOR KIT \$ _____ Provides added operator protection during some attachment applications. Includes ½" thick polycarbonate front door. Must order a Side Windows Kit, Cab Seals Kit and Special Applications Rear Window to completely enclose cab. Est. Install time: 3 hrs.
7214673	SPECIAL APPLICATIONS POLYCARBONATE REAR WINDOW KIT..... \$ _____ Provides added operator protection during some attachment applications. Includes ½" thick polycarbonate rear window. Must order a Side Windows Kit, Cab Seals Kit and Special Applications Front Door to completely enclose cab. Est. Install time: 0.5 hr.

Cab Accessories – Heat and Air Conditioning

7238378	AIR CONDITIONING KIT – TIER 4 (T630/T650)..... \$ _____ Loader must be equipped with Cab Enclosure with Heater. Est. Install time: 8 hrs.
7252056	AIR CONDITIONING KIT – TIER 4 (T740/T750/T770)..... \$ _____ Loader must be equipped with Cab Enclosure with Heater. Est. Install time: 8 hrs.
7252060	AIR CONDITIONING KIT – TIER 4 (T870) \$ _____ Loader must be equipped with Cab Enclosure with Heater. Est. Install time: 8 hrs.
7128484	HEATER KIT \$ _____ Cab Accessory Harness is required, see Cab Accessory Harness & Lower Interior Panels kit for details. Must also order heater plumbing kit. Est. Install time: 5 hrs. to install heater and plumbing kit
7238377	HEATER PLUMBING KIT – TIER 4 (T630/T650)..... \$ _____ Est. Install time: 5 hrs. to install heater and plumbing kit
7256971	HEATER PLUMBING KIT – TIER 4 (T740) \$ _____ Est. Install time: 5 hrs. to install heater and plumbing kit
7252058	HEATER PLUMBING KIT – TIER 4 (T750/T770)..... \$ _____ Est. Install time: 5 hrs. to install heater and plumbing kit
7252062	HEATER PLUMBING KIT – TIER 4 (T870) \$ _____ Est. Install time: 5 hrs. to install heater and plumbing kit
7200657	LOWER AIR DUCT KIT \$ _____ Includes two additional air ducts to direct air flow towards the foot well and lower cab door area. Loader must be equipped with Cab Enclosure and Heater or Air Conditioning. Est. Install time: 1-3 hrs. (depends on loader model and s/n)

T630/T650/T740/T770/T870

BOBCAT COMPACT TRACK LOADERS

PART NUMBER	DEALER INSTALLED ACCESSORIES – ORDER FROM PARTS	
	DESCRIPTION	

Cab Accessories – Other

	<p>CAB ACCESSORY HARNESS & LOWER INTERIOR PANELS \$ _____</p> <p>See Dealer Parts Department for the correct kit part number. This kit is needed for Base Cabs Only when field installing any of the following accessories; cab enclosure with heat or air conditioning, four-way flasher / turn signal kit, hydraulic bucket positioning, power Bob-Tach kit, rear wiper kit, rotating beacon kit, strobe light kit or radio. Includes Cab Accessory Harness and Lower Interior Panels. Need to order Deluxe Headliner Kit or Deluxe Heater/Air Conditioning Headliner Kit & Cup Holder Kit to finish interior. Est. Install time: 5 hrs.</p>	
7167395	<p>CUP HOLDER KIT \$ _____</p> <p>Lower Interior Panels are required, see Cab Accessory Harness & Lower Interior Panels kit for details. Includes side and front cup holder. Est. Install time: 1 hr.</p>	
7174903	<p>CAB SEALS KIT (T630/T650/T740/T750/T770) \$ _____</p> <p>Includes bottom of cab and foot pod area seals. Needed to completely enclose the cab. Est. Install time: 2.5 hrs.</p>	
7192140	<p>CAB SEALS KIT (T870) \$ _____</p> <p>Includes bottom of cab and foot pod area seals. Needed to completely enclose the cab. Est. Install time: 2.5 hrs.</p>	
7170782	<p>DELUXE CAB GAS SPRING KIT \$ _____</p> <p>3rd gas spring for enclosed cab. Est. Install time: 1 hr.</p>	
7156253	<p>DELUXE HEADLINER KIT \$ _____</p> <p>Includes headliner with light and rear corner cab trim. Est. Install time: 1 hr.</p>	
7174171	<p>DELUXE HEATER / AIR CONDITIONING HEADLINER KIT \$ _____</p> <p>Includes Headliner with interior light, air conditioning/heater vents and rear corner cab trim. Needed to upgrade non-AC/Heater cab to include AC/Heat. Est. Install time: 1 hr.</p>	
7196560	<p>FORESTRY WIPER KIT \$ _____</p> <p>Loader must be equipped with Forestry Door; Reference P/N 7174127 Forestry Door or 7230523 Forestry Applications Kit for detail. Est. Install time: 1 hr.</p>	
7238900	<p>HEPA FILTER KIT \$ _____</p> <p>Est. Install time: 0.5 hr.</p>	
7240148	<p>INTERMITTENT WIPER KIT \$ _____</p> <p>Includes intermittent wiper switch, cover, harness and tie straps. Kit allows operator to adjust the speed of the wiper to match the operating conditions. Est. Install time: 1 hr.</p>	
6725946	<p>REAR WINDOW EXTERNAL REMOVAL KIT \$ _____</p> <p>Recommended for use with Loader Radio Remote Control kit. Est. Install time: 1 hr.</p>	
7225133	<p>REAR WIPER KIT \$ _____</p> <p>Cab Accessory Harness is required, see Cab Accessory Harness & Lower Interior Panels kit for details. Deluxe Headliner, Lower Interior Panels and Front Door with Wiper are also required. Wiper is activated by a switch on the rear wiper motor. Est. Install time: 4 hrs.</p>	
7172897	<p>RESEAL PLUGS KIT \$ _____</p> <p>Includes plugs to seal the cab and frame after the removal of the following: FOPS Kit, Single Point Lift Kit, Four Point Lift Kit, and Backhoe Attachment. Est. Install time: 1 hr.</p>	
7172903	<p>WHITE DECAL KIT (CAB TOP) \$ _____</p> <p>Applied to cab top to maintain a cooler temperature inside the operator's cab. Est. Install time: 0.5 hr.</p>	

T630/T650/T740/T770/T870 BOBCAT COMPACT TRACK LOADERS

PART NUMBER	DEALER INSTALLED ACCESSORIES – ORDER FROM PARTS DESCRIPTION
-------------	---

Counterweight Kits

7129250	COUNTERWEIGHT KIT, 200 LBS \$ _____ Includes (4) 50 lb weights that bolt to rear uprights of loader. See operator’s manual for ROC increase. Not compatible with Quick-Tach Water Kit or Rear Stabilizers. Est. Install time: 1 hr.	
7129251	COUNTERWEIGHT KIT, 300 LBS. \$ _____ Includes (6) 50 lb weights that bolt to rear uprights of loader. See operator’s manual for ROC increase. Not compatible with Quick-Tach Water Kit or Rear Stabilizers. Est. Install time: 1 hr.	
7129252	COUNTERWEIGHT KIT, 400 LBS (T740/T750/T770/T870). \$ _____ Includes (8) 50 lb weights that bolt to rear uprights of loader. See operator’s manual for ROC increase. Not compatible with Quick-Tach Water Kit or Rear Stabilizers. Est. Install time: 1 hr.	

Electrical Accessories

_____	ATTACHMENT CONTROL KIT \$ _____ For complete listing of Attachment Control Kits, P/N’s and Descriptions – Refer to Attachments Section of the Price Pages.	
7169103	CAB ACCESSORY ADAPTER HARNESS \$ _____ For Loaders without Cab Accessory Harness. Needed for Strobe, Beacon and Four-Way Flasher. Est. Install Time: 0.5 hr.	
7128338	FOUR-WAY FLASHER / TURN SIGNAL KIT \$ _____ Cab Accessory Harness or Cab Accessory Adapter Harness is required; Reference Cab Accessory Harness & Lower Interior Panels kit or Cab Accessory Adapter Harness for details. Est. Install time: 1 hr.	
7129299	ROTATING BEACON KIT. \$ _____ Cab Accessory Harness or Cab Accessory Adapter Harness is required; Reference Cab Accessory Harness & Lower Interior Panels kit or Cab Accessory Adapter Harness for details. Est. Install time: 1 hr.	
7129301	STROBE LIGHT KIT, AMBER \$ _____ Cab Accessory Harness or Cab Accessory Adapter Harness is required; Reference Cab Accessory Harness & Lower Interior Panels kit or Cab Accessory Adapter Harness for details. Est. Install time: 1 hr.	
7256348	SIDE LIGHT KIT \$ _____ Includes two LED side lights. Est. Install time: 0.5 hr.	

Engine Accessories

_____	AIR CLEANER PRE-CLEANER (T630/T650) Order the following from parts: Hose (iT4: 7157923, T4: 7234601), Hose Clamp (iT4: 5HM42, T4 5HM53), and Instructions (iT4: 7149931, T4 6990831). Est. Install time: 1 hr.	
7239665	ENGINE BLOCK HEATER KIT – TIER 4 \$ _____ Est. Install time: 0.25 hr.	
7265891	SCR INHIBIT SWITCH KIT (T750/T770/T870) \$ _____ Allows operator to perform a parked regeneration if too much soot is allowed to accumulate in the DPf. Est. Install time: 0.25 hr.	

T630/T650/T740/T770/T870

BOBCAT COMPACT TRACK LOADERS

PART NUMBER	DEALER INSTALLED ACCESSORIES – ORDER FROM PARTS DESCRIPTION
-------------	---

Hydraulic Accessories

7129447	HYDRAULIC BUCKET POSITIONING KIT (T630) \$ _____ Bucket Positioning helps the operator keep the same tilt position of the load during lifting. Cab Accessory Harness is required, see Cab Accessory Harness & Lower Interior Panels kit for details. Includes on/off switch. Est. Install time: 3 hrs.
7128442	HYDRAULIC BUCKET POSITIONING KIT (T650) \$ _____ Bucket Positioning helps the operator keep the same tilt position of the load during lifting. Cab Accessory Harness is required, see Cab Accessory Harness & Lower Interior Panels kit for details. Includes on/off switch. Est. Install time: 3 hrs.
7188811	HYDRAULIC BUCKET POSITIONING KIT (T740/T750/T770/T870) \$ _____ Bucket Positioning helps the operator keep the same tilt position of the load during lifting. Cab Accessory Harness is required, see Cab Accessory Harness & Lower Interior Panels kit for details. Includes on/off switch. Est. Install time: 3 hrs.
7207408	LIFT CYLINDER CUSHION PISTON (T650/T740/T750/T770) \$ _____ Softens the contact between the lift arms and mainframe reducing noise. Must also order Piston Nut p/n 6810540.
7231414	REAR AUXILIARY HYDRAULIC KIT (T630) \$ _____ Provides a flow of 8.5 GPM. Est. Install time: 10 hrs.
7231436	REAR AUXILIARY HYDRAULIC KIT (T650) \$ _____ Provides a flow of 8.5 GPM. Est. Install time: 10 hrs.
7220912	REAR AUXILIARY HYDRAULIC KIT – TIER 4 (T740) \$ _____ Provides a flow of 8.5 GPM. Est. Install time: 10 hrs.
7268436	REAR AUXILIARY HYDRAULIC KIT – TIER 4 (T750/T770) \$ _____ Provides a flow of 8.5 GPM. Est. Install time: 10 hrs.
7340125	REAR AUXILIARY HYDRAULIC KIT – TIER 4 (T870 TORSION) \$ _____ Provides a flow of 8.5 GPM. Est. Install time: 10 hrs.

Instrumentation

7213928	DELUXE INSTRUMENT PANEL WITH KEYLESS START \$ _____ Includes keyless start, feature lockouts, help screens, system diagnostic capability, clock, job clock, and more. Est. Install time: 1 hr.
7213929	KEYLESS START PANEL KIT \$ _____ Allows operator to start the loader by entering a reprogrammable number code. Est. Install time: 1 hr.

Lift Kits

7128411	FOUR-POINT LIFT KIT (T630) \$ _____ Cannot be used on loaders equipped with Backhoe Mounting Kit. Est. Install time: 2 hrs.
7156605	FOUR-POINT LIFT KIT (T650/T740/T750/T770) \$ _____ Cannot be used on loaders equipped with Backhoe Mounting Kit. Est. Install time: 2 hrs.
7150698	FOUR-POINT LIFT KIT (T870) \$ _____ Cannot be used on loaders equipped with Backhoe Mounting Kit. Est. Install time: 2 hrs.
7226713	SINGLE POINT LIFT KIT (T630/T650/T740/T750/T770) \$ _____ Est. Install time: 3 hrs.
7128432	SINGLE POINT LIFT KIT (T870) \$ _____ Est. Install time: 3 hrs.

T630/T650/T740/T770/T870 BOBCAT COMPACT TRACK LOADERS

PART NUMBER	DEALER INSTALLED ACCESSORIES – ORDER FROM PARTS DESCRIPTION
-------------	---

Loader Guard Kits

7206200	ENGINE COMPARTMENT SEAL KIT (T630) \$ _____ Kit includes cab/mainframe seal, tailgate seal, mainframe slot covers and lift cylinder boots. Not compatible with Rear Auxiliary Hydraulics or Rear Stabilizers. Est. Install time: 1.5 hrs.
7209981	ENGINE COMPARTMENT SEAL KIT (T650) \$ _____ Kit includes cab/mainframe seal, tailgate seal, mainframe slot covers and lift cylinder boots. Not compatible with Rear Auxiliary Hydraulics or Rear Stabilizers. Est. Install time: 1.5 hrs.
7190789	ENGINE COMPARTMENT SEAL KIT – TIER 4 (T740/T750/T770) \$ _____ Required when using M-series 700 Platform machines with forestry cutters. Kit includes cab/mainframe seal, tailgate seal, mainframe slot covers and lift cylinder boots. Not compatible with Rear Auxiliary Hydraulics or Rear Stabilizers. Est. Install time: 2 hrs.
7179952	ENGINE COMPARTMENT SEAL KIT – TIER 4 (T870) \$ _____ Required when using M-series 800 Platform machines with forestry cutters. Kit includes cab/Mainframe seal, tailgate seal, mainframe slot covers and lift cylinder boots. Not compatible with Rear Auxiliary Hydraulics or Rear Stabilizers. Est. Install time: 2 hr.
7129293	FOPS KIT \$ _____ Additional shield assembly for cab top. Meets ISO 3449, Level II Requirements. Est. Install time: 1.5 hrs.
7244920	MUFFLER GUARD KIT \$ _____ Est. Install time: 0.25 hr.
7249240	POWER BOBTACH GUARD KIT \$ _____ Est. Install time: 0.25 hr.
7174128	REAR WORK LIGHTS GUARD KIT (T630/T650/T740) \$ _____ Est. Install time: 0.5 hr.
7257724	REAR WORK LIGHTS GUARD KIT (T750/T770/T870) \$ _____ Est. Install time: 0.5 hr.
7174129	FRONT WORK LIGHTS GUARD KIT \$ _____ Est. Install time: 0.5 hr.
7250844	COUPLER GUARD KIT \$ _____ Est. Install time: 5 min.
7203665	REAR BUMPER KIT \$ _____ Includes bolt-on Rubber Bumper and mounting hardware. Helps protect the rear of the loader from damage due to scraping or contact with objects in tight places. Est. Install time: 1 hr.
7187059	TILT CYLINDER SHIELD KIT (T630/T650/T740/T750/T770) \$ _____ Est. Install time: 0.5 hr.
7187241	TILT CYLINDER SHIELD KIT (T870) \$ _____ Est. Install time: 0.5 hr.

Power Bob-Tach Kits

7310665	POWER BOB-TACH KIT \$ _____ Cab Accessory Harness is required, see Cab Accessory Harness & Lower Interior Panels kit for details. Must also order Power Bob-Tach Plumbing Kit. Est. Install time: 4 hrs. to install Power Bob-Tach Kit and Plumbing Kit.
_____	POWER BOB-TACH KIT (T870) \$ _____ Cab Accessory Harness is required, see Cab Accessory Harness & Lower Interior Panels kit for details. Must also order Power Bob-Tach Plumbing Kit. Est. Install time: 4 hrs. to install Power Bob-Tach Kit and Plumbing Kit.
7310061	POWER BOB-TACH PLUMBING KIT (T630) \$ _____ Est. Install time: 4 hrs. to install Power Bob-Tach Kit and Plumbing Kit.
7310663	POWER BOB-TACH PLUMBING KIT (T650) \$ _____ Est. Install time: 4 hrs. to install Power Bob-Tach Kit and Plumbing Kit.
7310805	POWER BOB-TACH PLUMBING KIT (T740/T750/T770) \$ _____ Est. Install time: 4 hrs. to install Power Bob-Tach Kit and Plumbing Kit.
_____	POWER BOB-TACH PLUMBING KIT (T870) \$ _____ Est. Install time: 4 hrs. to install Power Bob-Tach Kit and Plumbing Kit.

T630/T650/T740/T770/T870

BOBCAT COMPACT TRACK LOADERS

PART NUMBER	DEALER INSTALLED ACCESSORIES – ORDER FROM PARTS DESCRIPTION
-------------	---

Radio

6988435 RADIO KIT \$ _____
Includes weatherproof AM/FM/NOAA Weather Band Radio, Radio Mounting Bracket, Speakers, Antenna, and Installation Hardware. Works with MP3 or other portable music player. Cab Accessory Harness is required, see Cab Accessory Harness & Lower Interior Panels kit for details. Est. Install time: 3 hrs.

6676108 RADIO HEADPHONES \$ _____

Rear Camera Kit

7329670 REAR CAMERA KIT \$ _____
Includes camera, display and required parts for complete installation. Est. Install time: 4 hrs.

Remote Control Kits

7185234 LOADER RADIO REMOTE CONTROL KIT..... \$ _____
Allows an operator to start/stop the engine, operate the drive system and control the lift, tilt and auxiliary hydraulic functions remotely using a Radio Transmitter. The operator must maintain visual contact with the loader and the loader’s path of travel. Available for loaders equipped with Selectable Joystick Controls (SJC) or All Wheel Steer Loaders. Requires version 57 software or newer. Est. Install time: 0.5 hr.

6986516 LOADER RADIO REMOTE OPERATOR TRAINING KIT \$ _____

Reversing Fan Kits

7307657 REVERSING FAN KIT (T630/T650)..... \$ _____
Temporarily reverses cooling fan direction to blow dust and small debris from the radiator and rear screens. Includes three operating modes: Automatic, Momentary and OFF. Cab Accessory Harness is required, see Cab Accessory Harness & Lower Interior Panels kit for details. Est. Install Time: 3 hrs.

7307658 REVERSING FAN KIT (T740/T750/T770)..... \$ _____
Temporarily reverses cooling fan direction to blow dust and small debris from the radiator and rear screens. Includes three operating modes: Automatic, Momentary and OFF. Cab Accessory Harness is required, see Cab Accessory Harness & Lower Interior Panels kit for details. Est. Install Time: 3 hrs.

7307659 REVERSING FAN KIT (T870) \$ _____
Temporarily reverses cooling fan direction to blow dust and small debris from the radiator and rear screens. Includes three operating modes: Automatic, Momentary and OFF. Cab Accessory Harness is required, see Cab Accessory Harness & Lower Interior Panels kit for details. Est. Install Time: 3 hrs.

Ride Control Kits

7300378 RIDE CONTROL KIT (T630/T650) – MANUAL \$ _____
Provides a smoother ride by cushioning the lift arms when traveling over rough terrain. Est. Install time: 1.5 hrs.

7306398 RIDE CONTROL KIT (T630) – AUTO \$ _____
Provides a smoother ride by cushioning the lift arms when traveling over rough terrain. Includes on/off switch inside of cab. Est. Install time: 4 hrs.

7306400 RIDE CONTROL KIT (T650) – AUTO \$ _____
Provides a smoother ride by cushioning the lift arms when traveling over rough terrain. Includes on/off switch inside of cab. Est. Install time: 4 hrs.

7300393 RIDE CONTROL KIT (T740/T750/T770/T870) – MANUAL \$ _____
Provides a smoother ride by cushioning the lift arms when traveling over rough terrain. Est. Install time: 1.5 hrs.

7306402 RIDE CONTROL KIT (T740/T750/T770) - AUTO..... \$ _____
Provides a smoother ride by cushioning the lift arms when traveling over rough terrain. Includes on/off switch inside of cab. Est. Install time: 4 hrs.

7306404 RIDE CONTROL KIT (T870) - AUTO \$ _____
Provides a smoother ride by cushioning the lift arms when traveling over rough terrain. Includes on/off switch inside of cab. Est. Install time: 4 hrs.

T630/T650/T740/T770/T870

BOBCAT COMPACT TRACK LOADERS

PART NUMBER	DEALER INSTALLED ACCESSORIES – ORDER FROM PARTS DESCRIPTION
-------------	---

Seats & Seat Belts

7129303	SEAT BELT KIT, 3" WIDE For use with Suspension Seat only. Includes 3" retractable lap belt. Est. Install time: 0.5 hr.	\$ _____
7128405	SEAT BELT KIT, 3-POINT For use with Suspension Seat only. Includes 2" shoulder belt and 2" lap belt. Both are retractable. Est. Install time: 0.5 hr.	\$ _____
7169480	SEAT BELT KIT-3", 3-POINT For use with Suspension Seat only. Includes 2" shoulder belt and 3" lap belt. Both are retractable. Est. Install time: 0.5 hr.	\$ _____
7183366	SUSPENSION SEAT, AIR RIDE Vinyl material. Must also order a seat belt kit unless previously equipped with suspension seat. Est. Install time: 1 hr.	\$ _____
7312807	CLOTH HEATED AIR RIDE SEAT Includes Heat on/off switch on the back of the seat. The seat is not compatible with M-Series loaders and select M2-Series loaders. See Dealer Parts Department for the correct M2-Series loader serial number breaks.	\$ _____

Sound Reduction Kits

7213438	SOUND REDUCTION KIT (T630/T650) Includes insulating materials and hydraulic muffler to reduce sound levels at the operator's ear and for bystanders. Est. Install time: 2 hrs.	\$ _____
7178038	SOUND REDUCTION KIT (T870) Includes insulating materials and hydraulic muffler to reduce sound levels at the operator's ear and for bystanders. Est. Install time: 2 hrs.	\$ _____
7192149	DELUXE SOUND KIT FOR STANDARD OR ACS CONTROLS (T630/T650/T750/T770) Includes foot pod insulating materials to reduce sound levels at the operator's ear. Est. Install time: 1 hr.	\$ _____
7198364	DELUXE SOUND KIT FOR STANDARD CONTROLS WITH POWER ASSIST (T870) Includes foot pod insulating materials to reduce sound levels at the operator's ear. Est. Install time: 1 hr.	\$ _____
7192150	DELUXE SOUND KIT FOR SJC CONTROLS Includes foot pod insulating materials to reduce sound levels at the operator's ear. Est. Install time: 1 hr.	\$ _____

Training Kits

6901726	BOBCAT LOADER OPERATOR TRAINING KIT	\$ _____
6900641	BOBCAT LOADER SERVICE TRAINING KIT	\$ _____
6904762	BOBCAT OPERATOR SAFETY DVD Includes all of the 10-minute operator safety videos in both English and Spanish.	\$ _____

T630/T650/T740/T770/T870

BOBCAT COMPACT TRACK LOADERS

PART NUMBER	DEALER INSTALLED ACCESSORIES – ORDER FROM PARTS DESCRIPTION
-------------	---

Other Accessories

7256406	AIR DEFLECTOR KIT (T630) Est. Install time: 0.5 hr.	\$ _____
7257437	AIR DEFLECTOR KIT (T740/T750/T770) Est. Install time: 0.5 hr.	\$ _____
7129307	FIRE EXTINGUISHER KIT Est. Install time: 0.5 hr.	\$ _____
7232264	HP ASPIRATION KIT Est. Install time: 0.5 hr.	\$ _____
7257869	LOADER WEIGHLOG SCALE KIT Measures hydraulic pressure at a specific position during the lifting cycle for either static or dynamic weighing. The weighlog kit is not a certified scale. Please see Bobcat Parts Sales & Merchandising Manual for additional details. Est. Install time: 4 hrs.	\$ _____
7023550	LOCKING FUEL CAP Includes a Black Locking Fuel Cap that is keyed the same as the loader. Key is NOT included. Additional locking fuel cap options are available through parts.	\$ _____
7128403	SECURITY LOCKS KIT Est. Install time: 0.5 hr.	\$ _____

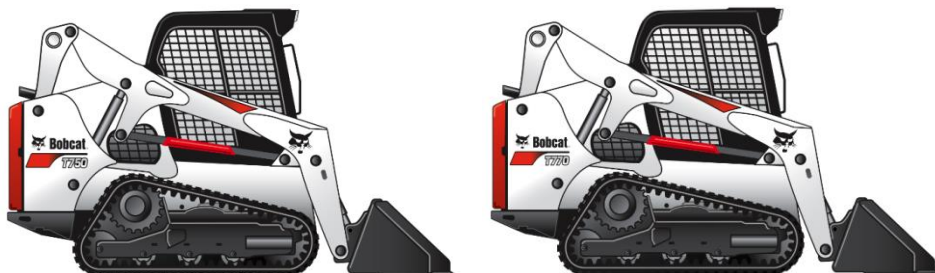
Discontinued Models

BOBCAT COMPACT TRACK LOADERS

The following models have been discontinued and are no longer available: T750 Tier 4 (M0281), T870 Tier 4 (M0295). Check dealer inventory for availability

T750 (Tier 4)

BOBCAT COMPACT TRACK LOADERS



STANDARD EQUIPMENT

- | | |
|---|---|
| <p>85.0 HP Turbo Tier 4 Diesel Engine (T750)
 Air Intake Heater (Automatically Activated)
 Auxiliary Hydraulics: Variable Flow
 Backup Alarm
 Bob-Tach
 Bobcat Interlock Control System (BICS™)
 Controls: Bobcat Standard
 Cylinder Cushioning – Lift, Tilt
 Engine/Hydraulic Systems Shutdown
 Horn
 Instrumentation: Engine Temperature & Fuel Gauges,
 Hourmeter, RPM and Warning Lights
 Lift Arm Support
 Lift Path: Vertical
 Lights, Front & Rear</p> | <p>Operator Cab</p> <ul style="list-style-type: none"> • Includes: Adjustable Suspension Seat, Top & Rear Windows, Seat Bar & Seat Belt • Roll Over Protective Structure (ROPS) meets SAE-J1040 & ISO 3471 • Falling Object Protective Structure (FOPS) meets SAE-J1043 & ISO 3449, Level I; (Level II is available through Bobcat Parts) <p>Parking Brake – Spring Applied, Pressure Released (SAPR)
 Solid Mounted Carriage with 5 Rollers
 Tracks: Rubber, 17.7" Wide</p> |
|---|---|

QUICK SPECS

	<u>T750</u>
Rated Operating Capacity-35% of Tipping Load*	3,325 lbs.
• With Roller Suspension Carriage	3,200 lbs.
Operating Capacity- 50% of Tipping load	4,750 lbs.
Tipping Load	9,500 lbs.
Engine Model	3.4L Bobcat Engine
Engine Fuel	Diesel
Engine Cooling	Liquid
Horsepower	85.0
Hydraulic Pump Capacity-Standard Flow	23 GPM
Hydraulic Pump Capacity-High Flow (Optional)	36.6 GPM
Travel Speed	6.6 MPH
Travel Speed – 2 Speed Option	6.1/10.7 MPH
Operating Weight	10,465 lbs.
• With Roller Suspension Carriage	10,573 lbs.
Shipping Weight	9,534 lbs.
Cab Height	81.3"
Width (w/out Attachment)	78.0"
Length (w/out Attachment)	114.3"
Ground Contact Length	63.7"
Reach at Maximum Height	33.6"
Height to Hinge Pin	132.0"

T750 (Tier 4)

BOBCAT COMPACT TRACK LOADERS

PART NUMBER	DESCRIPTION	SLP IN	US \$
-------------	-------------	--------	-------

M0281	T750 COMPACT TRACK LOADER (EQUIPPED WITH T4 ENGINE)	\$73,794	
--------------	--	-----------------	--

PART NUMBER	DESCRIPTION	SLP IN	US \$
-------------	-------------	--------	-------

M__-P01-A91	A91 OPTION PACKAGE	\$10,113	
M__-P01-A71	A71 OPTION PACKAGE	\$6,108	
M__-P01-A51	A51 OPTION PACKAGE	\$4,835	

<u>A51</u>	<u>A71</u>	<u>A91</u>
Enclosed Cab with AC/Heat Cab Accessories Package* Power Bob-Tach	Enclosed Cab with AC/Heat Cab Accessories Package* Power Bob-Tach Sound Reduction Deluxe Instrument Panel with Keyless Start Attachment Control Kit	Enclosed Cab with AC/Heat Cab Accessories Package* Power Bob-Tach Sound Reduction Deluxe Instrument Panel with Keyless Start Attachment Control Kit High Flow Hydraulics Two Speed w/ 3-Point Seat Belt Hydraulic Bucket Positioning

PART NUMBER	DESCRIPTION	SLP IN	US \$
-------------	-------------	--------	-------

M__-P01-O51	O51 OPTION PACKAGE	\$1,260	
--------------------	---------------------------------	----------------	--

O51
 Cab Accessories Package*
 Power Bob-Tach

**Cab Accessories Package: Deluxe Headliner with Dome Light, Cab Accessory Harness, Power Port, Lower Interior Panels with Storage Compartments and Cup Holder.*

T750 (Tier 4)

BOBCAT COMPACT TRACK LOADERS

PART NUMBER	DESCRIPTION	FACTORY INSTALLED OPTIONS	SLP IN US \$
-------------	-------------	---------------------------	--------------

Control Options

M__-R01-C03	ADVANCED CONTROL SYSTEM (ACS) ACS allows operator to select either hand or foot control of lift and tilt functions. <i>*The Cab Accessories Package is required.</i>		\$1,845
M__-R01-C04	SELECTABLE JOYSTICK CONTROL (SJC) Features include: Selectable patterns (ISO or H-Pattern), Auto Idle, Horsepower Management, Speed Management, Drive Response, Drift Compensation and Foot Pedal for Engine Speed Control. <i>*The Cab Accessories Package is required.</i>		\$945

Individual Option Requirements

NOTE: *The following options may require additional equipment, see details below. If the required equipment is not included in a Cab Package the Bobcat ordering systems will automatically add the equipment to the order.*

CAB ACCESSORIES PACKAGE

Required for Reversing Fan, Hydraulic Bucket Positioning, Automatic Ride Control, ACS, & SJC. The Cab Accessories Package is included in all Cab Packages. If a Cab Package is not ordered, you must add

\$415

7-PIN ATTACHMENT CONTROL KIT

Required for High Flow Hydraulics. The 7-Pin Attachment Control Kit is included in the A71 and A91 Cab Packages, if one of those Cab Packages is not ordered, you must add

\$205

Individual Options

The options may require additional equipment for operation, see option requirements above for details.

M__-R03-C03	HIGH FLOW HYDRAULICS Provides 36.6 GPM and 3500 PSI for attachment operation. The 7 pin attachment control kit is required.		\$1,883
M__-R04-C02	TWO SPEED Includes 2-speed motors and 3-Point Seat Belt. Low Travel Speed 6.1 MPH, High Travel Speed 10.7 MPH.		\$2,010
M__-R11-C02	HYDRAULIC BUCKET POSITIONING Bucket Positioning helps the operator keep the same tilt of the load during lifting. Includes On/Off switch. Cab Accessories Package required.		\$468
M__-R05-C11	CLOTH HEATED AIR RIDE SUSPENSION SEAT Includes Heat on/off switch on the back of the seat. Must order an A or O cab package.		\$436
M__-R26-C02	RADIO Includes weatherproof AM/FM/NOAA Weather Band Radio, Speakers, and Antenna. Works with MP3 or other portable music player. <i>Must order an A or O cab package.</i>		\$417
M__-R32-C02	REVERSING FAN Temporarily reverses the cooling fan direction to blow dust and small debris from the radiator and rear screens. Includes three operating modes: Automatic, Momentary, & OFF. The Cab Accessories Package is required. See NOTE above.		\$495
M__-R33-C02	AUTOMATIC RIDE CONTROL Automatically activates by detecting increased hydraulic lift arm pressure when the loader is carrying material. Includes on/off switch. The Cab Accessories Package is required. See NOTE above.		\$595

T750 (Tier 4)

BOBCAT COMPACT TRACK LOADERS

PART NUMBER	DESCRIPTION	FACTORY INSTALLED OPTIONS	SLP IN US \$
-------------	-------------	---------------------------	--------------

Tracks

M__-R21-C11	ROLLER SUSPENSION CARRIAGE		\$1,638
	Includes Solid Mounted undercarriage and 4 Rollers with Leaf Spring style suspension. Compatible with 12.6" tracks (Loader width 73.4") or 17.7" tracks (Loader width 78.0"). <i>Roller suspension carriage is not available with single speed</i>		

NOTE: **12.6" RUBBER TRACKS (AVAILABLE FROM PARTS)**
 Changes width of T750 and T770 from 78 to 72.9 inches. Must order quantity of 2 tracks.
 Est. Install time: 1.5 hrs.

PART NUMBER	DESCRIPTION	DEALER INSTALLED ACCESSORIES – ORDER FROM SALES	SLP IN US \$
-------------	-------------	---	--------------

Cab Accessories

7257723	FORESTRY APPLICATIONS KIT – TIER 4 T750-T770		\$ _____
	Kit is required to operate Forestry Cutter and provides operator and machine protection. For kit contents, see Forestry Cutter in Attachments Section. Not compatible with Rear Auxiliary Hydraulics. Must also order Engine Compartment Seal Kit from parts. Est. Install time: 6.5 hrs.		

Note: Forestry Wiper Kit (P/N 7196560) is available for the Forestry Applications Kit, order from parts.

T870 (Tier 4)

BOBCAT COMPACT TRACK LOADER



STANDARD EQUIPMENT

- | | |
|--|---|
| <ul style="list-style-type: none"> 100 HP Turbo Tier 4 Diesel Engine 2-Speed Travel Air Intake Heater (Automatically Activated) Auxiliary Hydraulics: Variable Flow Backup Alarm Bob-Tach Bobcat Interlock Control System (BICS™) Controls: Bobcat Standard Controls with Power Assist Cylinder Cushioning – Lift, Tilt Enclosed Cab with Air Conditioning & Heat Engine/Hydraulic Systems Shutdown Horn Instrumentation: Engine Temperature & Fuel Gauges, Hourmeter, RPM and Warning Lights Lift Arm Support | <ul style="list-style-type: none"> Lift Path: Vertical Lights, Front & Rear Operator Cab <ul style="list-style-type: none"> • Includes: Adjustable Suspension Seat, Top & Rear Windows, Seat Bar & Seat Belt • Roll Over Protective Structure (ROPS) meets SAE-J1040 & ISO 3471 • Falling Object Protective Structure (FOPS) meets SAE-J1043 & ISO 3449, Level I; (Level II is available through Bobcat Parts) Parking Brake – Spring Applied, Pressure Released (SAPR) Power Bob-Tach Roller Suspension with 4 Rollers Tracks: Rubber, 17.7" Wide |
|--|---|

QUICK SPECS

Rated Operating Capacity-35% of Tipping Load	3,525 lbs.
Operating Capacity - 50 % of Tipping Load	5,030 lbs.
Tipping Load	10,072 lbs.
Engine Model	3.4L Bobcat Engine
Engine Fuel.....	Diesel
Engine Cooling	Liquid
Horsepower.....	100
Hydraulic Pump Capacity – Standard Flow.....	23.0 GPM
Hydraulic Pump Capacity – High Flow (Optional)	36.6 GPM
Travel Speed.....	7.2 MPH
Travel Speed – 2 Speed Option	6.5/11.4 MPH
Operating Weight	12,925 lbs.
Shipping Weight.....	11,749 lbs.
Cab Height.....	83.4"
Width (w/out Attachment).....	83"
Length (w/out Attachment).....	119.3"
Ground Contact Length	68.9"
Reach at Maximum Height.....	36.5"
Height to Hinge Pin	144"

T870 (Tier 4)

BOBCAT COMPACT TRACK LOADERS

PART NUMBER	DESCRIPTION	SLP IN US \$
-------------	-------------	--------------

M0295	T870 COMPACT TRACK LOADER (EQUIPPED WITH T4 ENGINE)	\$87,957
--------------	--	-----------------

AIR CONDITIONED/HEATED CAB PACKAGES		
PART NUMBER	DESCRIPTION	SLP IN US \$

M0295-P01-A91	A91 OPTION PACKAGE	\$3,607
M0295-P01-A71	A71 OPTION PACKAGE	\$1,273

<p><u>A71</u> Cab Accessories Package* Sound Reduction Deluxe Instrument Panel with Keyless Start Attachment Control Kit</p>	<p><u>A91</u> Cab Accessories Package* Sound Reduction Deluxe Instrument Panel with Keyless Start Attachment Control Kit High Flow Hydraulics Hydraulic Bucket Positioning</p>
--	--

**Cab Accessories Package: Deluxe Headliner with Dome Light, Cab Accessory Harness, Power Port, Lower Interior Panels with Storage Compartments and Cup Holder.*

T870 (Tier 4)

BOBCAT COMPACT TRACK LOADERS

PART NUMBER	DESCRIPTION	FACTORY INSTALLED OPTIONS	SLP IN US \$
-------------	-------------	---------------------------	--------------

Control Options

M0295-R01-C04	SELECTABLE JOYSTICK CONTROL (SJC) Features include: Selectable patterns (ISO or H-Pattern), Auto Idle, Horsepower Management, Speed Management, Drive Response, Drift Compensation and Foot Pedal for Engine Speed Control.		\$945
----------------------	---	--	--------------

Individual Option Requirements

NOTE: *The following options may require additional equipment, see details below. If the required equipment is not included in a Cab Package the Bobcat ordering systems will automatically add the equipment to the order.*

7-PIN ATTACHMENT CONTROL KIT

Required for High Flow Hydraulics. The 7-Pin Attachment Control Kit is included in the A71 and A91 Cab Packages, if one of those Cab Packages is not ordered, you must add

\$205

Individual Options

The options may require additional equipment for operation, see option requirements above for details.

M0295-R03-C03	HIGH FLOW HYDRAULICS Provides 36.6 GPM and 3500 PSI for attachment operation. The 7 pin attachment control kit is required.		\$1,883
M0295-R11-C02	HYDRAULIC BUCKET POSITIONING Bucket Positioning helps the operator keep the same tilt of the load during lifting. Includes On/Off switch.		\$468
M0295-R05-C11	AIR RIDE SUSPENSION SEAT Must order an A, H or O Cab Package.		\$314
M0295-R26-C02	RADIO Includes weatherproof AM/FM/NOAA Weather Band Radio, Speakers, and Antenna. Works with MP3 or other portable music player. Must order an A, H or O Cab Package.		\$417
M__-R32-C02	REVERSING FAN Temporarily reverses the cooling fan direction to blow dust and small debris from the radiator and rear screens. Includes three operating modes: Automatic, Momentary, & OFF.		\$495
M__-R33-C02	AUTOMATIC RIDE CONTROL Automatically activates by detecting increased hydraulic lift arm pressure when the loader is carrying material. Includes on/off switch.		\$595

PART NUMBER	DESCRIPTION	DEALER INSTALLED ACCESSORIES – ORDER FROM SALES	SLP IN US \$
-------------	-------------	---	--------------

Cab Accessories

7257723	FORESTRY APPLICATIONS KIT – TIER 4 Kit is required to operate Forestry Cutter and provides operator and machine protection. For kit contents, see Forestry Cutter in Attachments Section. Not compatible with Rear Auxiliary Hydraulics. Must also order Engine Compartment Seal Kit from parts. Est. Install time: 6.5 hrs.		\$ _____
----------------	---	--	----------

Note: Forestry Wiper Kit (P/N 7196560) is available for the Forestry Applications Kit, order from parts.